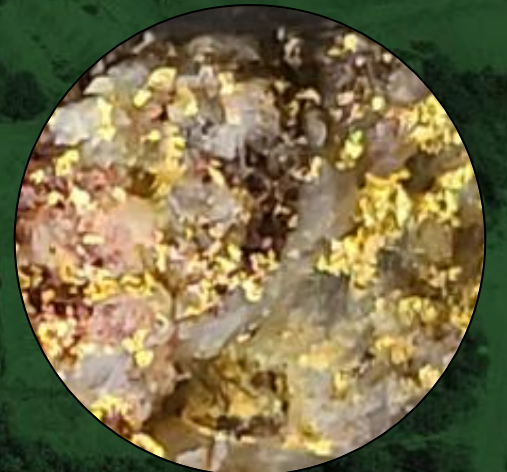




SRANAN GOLD

Exploring the Heart of Suriname's Modern-Day Gold Rush

June 2026



Forward Looking Statement

Legal Disclaimer

This presentation of Sranan Gold Corp. ("Sranan" or the "Company") is for information only and shall not constitute an offer to buy, sell, issue or subscribe for, or the solicitation of an offer to buy, sell, issue or subscribe for any securities in any jurisdiction. The information contained herein is subject to change without notice and is based on publicly available information, internally developed data and other sources. Where any opinion or belief is expressed in this presentation, it is based on the assumptions and limitations mentioned herein and is an expression of present opinion or belief only. No warranties or representations can be made as to the origin, validity, accuracy, completeness, currency or reliability of the information. The Company disclaims and excludes all liability (to the extent permitted by law) for losses, claims, damages, demands, costs and expenses of whatever nature arising in any way out of or in connection with the information in this presentation, its accuracy, completeness or by reason of reliance by any person on any of it. This presentation should not be construed as legal, financial or tax advice to any individual, as each individual's circumstances are different. Readers should consult with their own professional advisors regarding their particular circumstances. There are certain risks inherent in an investment in the securities of the Company that prospective investors should carefully consider before investing in the securities of the Company.

Forward-Looking Statements

This presentation contains "forward-looking information" within the meaning of applicable Canadian securities legislation and "forward-looking statements" within the meaning of applicable United States securities legislation, together, "forward-looking statements". Such forward-looking statements contain known and unknown risks, uncertainties, and other factors that may cause our actual results, performance, or achievements, or developments within our industry, to differ materially from the anticipated results, performance, or achievements expressed or implied by such forward-looking statements. Forward-looking statements are statements that are not historical facts and are generally, but not always, identified by the words "expects", "aims", "plans", "anticipates", "believes", "intends", "estimates", "projects", "potential", and similar expressions, or that conditions "will", "would", "may", "could", or "should" occur. Forward-looking statements included in this presentation include, but are not limited to: statements with respect to the Company's expectations regarding drilling and exploration activities on properties in which the Company has or may acquire an interest; and information with respect to the Company's continued exploration programs (including size and budget). Information inferred from the interpretation of exploration results and information concerning potential mineralization may also be deemed to be forward-looking statements, as such information constitutes a prediction of what might be found to be present if a project is actually developed. There can be no assurance that such statements will prove to be accurate. Actual results and future events may differ materially from those anticipated in such statements and readers are cautioned not to place undue reliance on these forward-looking statements that speak only as of their respective dates. Important factors that could cause actual results to differ materially from the Company's expectations could include among others: risks related to fluctuations in mineral prices; uncertainties related to raising sufficient financing to fund planned work in a timely manner and on acceptable terms; changes in planned work resulting from weather, logistical, technical, or other factors; risks associated with emerging and developing markets; the possibility that results of work will not fulfill expectations and realize the perceived potential of the properties in question; political uncertainty and other risks of doing business in Suriname; the Company's inability to obtain property rights and interests as currently proposed or at all; uncertainties in the estimation of any potential future mineral resources or reserves; the possibility that required permits may not be obtained in a timely manner or at all; the possibility that capital and exploration costs may be higher than estimated and may preclude or render future exploration and development uneconomic; risk of accidents, equipment breakdowns or labour disputes or other unanticipated difficulties or interruptions; the possibility of cost overruns or other unanticipated expenses in work programs; the risk of environmental contamination or damage resulting from the Company's operations; risks associated with title to mineral properties; and other risks and uncertainties discussed elsewhere in the Company's documents made publicly available from time to time. These statements are based on a number of assumptions; including assumptions regarding general market conditions, the availability of financing for proposed transactions and programs on reasonable terms, and the ability of outside service providers to deliver services in a satisfactory and timely manner. Forward-looking statements are based on the beliefs, estimates, and opinions of the Company's management on the date the statements are made. Except as expressly required by applicable securities laws the Company undertakes no obligation to update these forward-looking statements in the event that managements beliefs, estimates, opinions or other factors, should change.

Public Data

This presentation also contains or references certain industry data which is based upon information from independent industry publications, market research, analyst reports and surveys and other publicly available sources. Although the Company believes these sources to be generally reliable, such information is subject to interpretation and cannot be verified with complete certainty due to limits on the availability and reliability of raw data, the voluntary nature of the data gathering process and other inherent limitations and uncertainties. The Company has not independently verified any of the data from third party sources referred to in this presentation and accordingly, the accuracy and completeness of such data is not guaranteed.

Qualified Person

Mr. Michael Dufresne, M.Sc., P.Geol., P.Geo. is "qualified person", as defined under National Instrument 43-101, for Sranan's exploration projects in Suriname. Mr. Dufresne, who is considered independent of the Company, has reviewed and approved the scientific and technical information in this presentation.

Sranan Gold – A “New” Surinamese Explorer



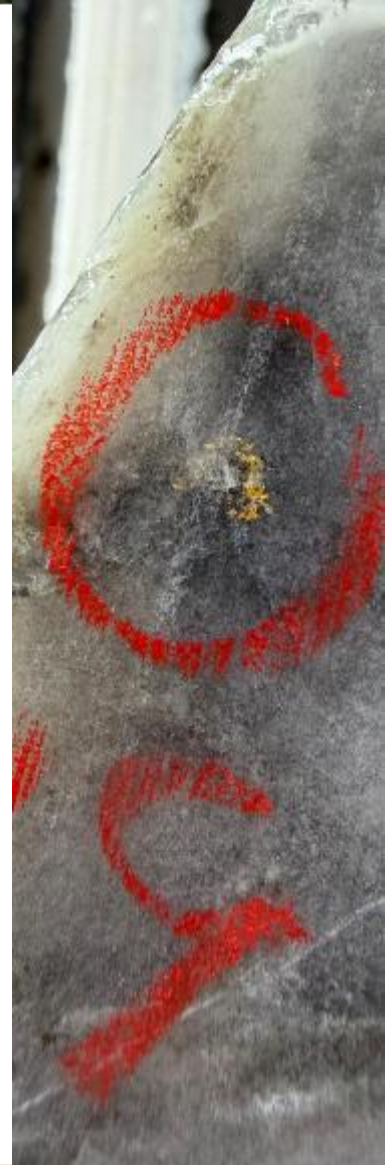
Two Active Exploration Campaigns Funded by Recent \$3.6M PP

Tapanahony Gold Project (commenced 2025)

- Ongoing drill campaign targeting extensive artisanal mining along the Poeketi Shear Zone
- 4,189 m of diamond drilling completed in 2025 with significant drill results returned:
 - 3.00 g/t Au over 64.0 m including 17 m @ 10.50 g/t Au (25RADD-04)
 - 7.33 g/t Au over 11.0 m (25RADD-011)
- 2nd drill rig recently mobilized to the Poeketi target

Lawatino Gold Project (mobilized crews late May 2026)

- Area of active alluvial mining
- Located adjacent to and on-trend with Founders Metals’ Antino Property
- Geological / prospecting crews commencing program of geological mapping & trenching and soil sampling
- Recently completed Fracture Density Model confirmed structural complexity and identified several high-priority targets



A Management Team Built for Success



Oscar Louzada
CEO & DIRECTOR

Resource-focused executive with over 25 years international experience, including the past 12 years in Suriname.

Previously worked with Beeson Gregory (Investec) and Canaccord Genuity helping finance numerous exploration and development companies in the natural resources sector with a particular focus on South America, Central Asia, Africa and Europe.

Has been a principal of three natural resources companies: exploration in Suriname gold (Sumin Resources); production of fertilizer (Uzbekistan); and an 8,000 tpa copper cathode production company in the US (Idaho).

Fluent in Dutch, the primary language of Suriname.



Jonathan Yan
CFO & COMPANY SECRETARY

Experienced in Accounting with over 13 years of experience in audit and accounting for various private and publicly listed Canadian companies.

Currently the Chief Financial Officer of Algo Grande Copper Corp (TSXV: ALGR) and Alset AI Ventures Inc. (TSXV: GPUS).

Was a Director and Chief Financial Officer of Sranan Gold Corp. (formerly Peak Minerals Ltd) (CSE: SRAN) from May 2023 to April 2025 and returned as the Chief Financial Officer of Sranan Gold in April 2026.

Holds a CPA, CA designation in addition to a Diploma in Accounting and a Bachelor of Science Degree from the University of British Columbia.



Rayiez Bhoelan
VP OF EXPLORATION

Experienced exploration geologist with over a decade of Guiana Shield exploration specializing in structural controls of complex orogenic gold deposits.

Formerly responsible for driving greenfield exploration, geochemistry, and field mapping for lamgold's Suriname regional exploration and key team member at lamgold's Pikin Saramacca project; fast-tracked exploration towards 1.5 million ounces of P&P gold.

Held senior roles with Omai Gold Mines and other companies and former senior consulting geologist at Founder Metals Inc.

Part-time lecturer in geochemistry at Anton de Kom University of Suriname.

Experienced Support and Direction

Mario Stifano **Independent Director & Audit Committee Chair**

Seasoned mining executive and Chartered Professional Accountant with 25 years of experience across exploration, development, and producing mining companies. Currently CEO of Galantas Gold and Executive Chairman of Doré Copper Mining Corp., with prior senior leadership roles including CEO of Cordoba Minerals, Executive Chairman of Mega Precious Metals, and VP & CFO at Lake Shore Gold and Ivernia. Instrumental in raising \$700M+ to advance mining projects, including leading the team that acquired, financed, and listed the historic Omai Mine in Guyana in 2020.

Ron Halas **Independent Director**

Canadian mining engineer with more than 35 years of international experience including 5 years in Suriname as IAMGOLD's Vice President, Commercial - South America. He was an integral part of the team that negotiated for the acquisition of the Saramacca concession for IAMGOLD's Rosebel Gold Mine. As CEO of Global Atomic Corp., Mr. Halas advanced the Dasa uranium project from PEA to mine development in approximately 2.5 years, and as COO of Lumina Gold Corp., he delivered the Cangrejos feasibility study ultimately leading to Lumina's \$581 million sale to CMOC Group Limited in 2025.

Oscar Louzada **Director & CEO**

Resource-focused executive with over 25 years international experience, including the past 12 years in Suriname. Previously worked with Beeson Gregory (Investec) and Canaccord Genuity helping finance numerous exploration and development companies in the natural resources sector with a particular focus on South America, Central Asia, Africa and Europe. Has been a principal of three natural resources companies: exploration in Suriname gold (Sumin Resources); production of fertilizer (Uzbekistan); and an 8,000 tpa copper cathode production company in the US (Idaho).

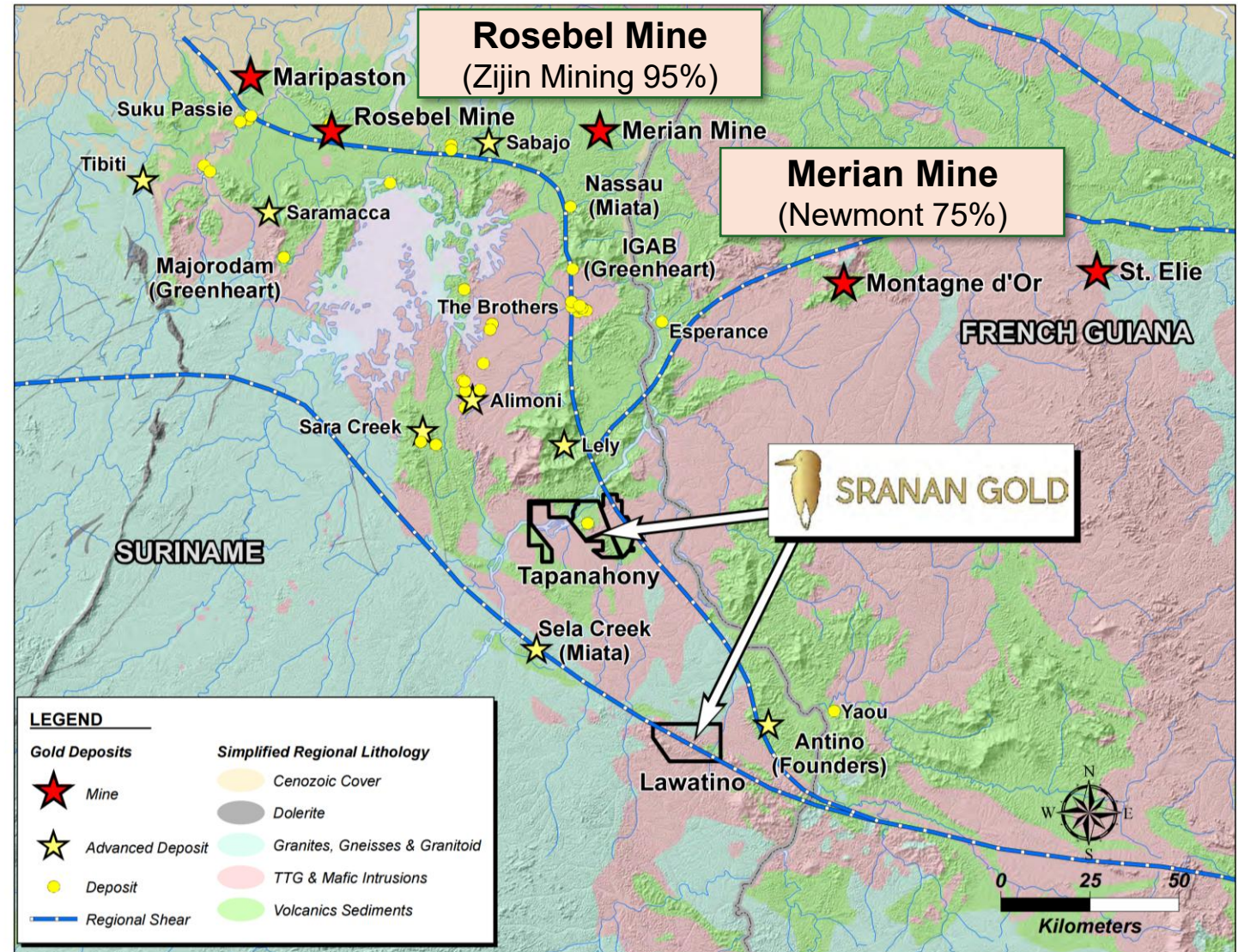
Ron Shenton **Independent Director**

Capital markets professional with 40 years of experience, beginning as an investment advisor at a national brokerage firm before moving to a regional platform. Founder of multiple public companies, he has served as CEO and director, led investor and public relations, and raised growth capital across sectors — primarily mining exploration, with additional experience in biotech, cybersecurity, technology, and oil and gas.

Guiana Shield – Sranan Project Locations

The Guiana Shield hosts world-class, gold producing greenstone belt with two major operating gold mines:

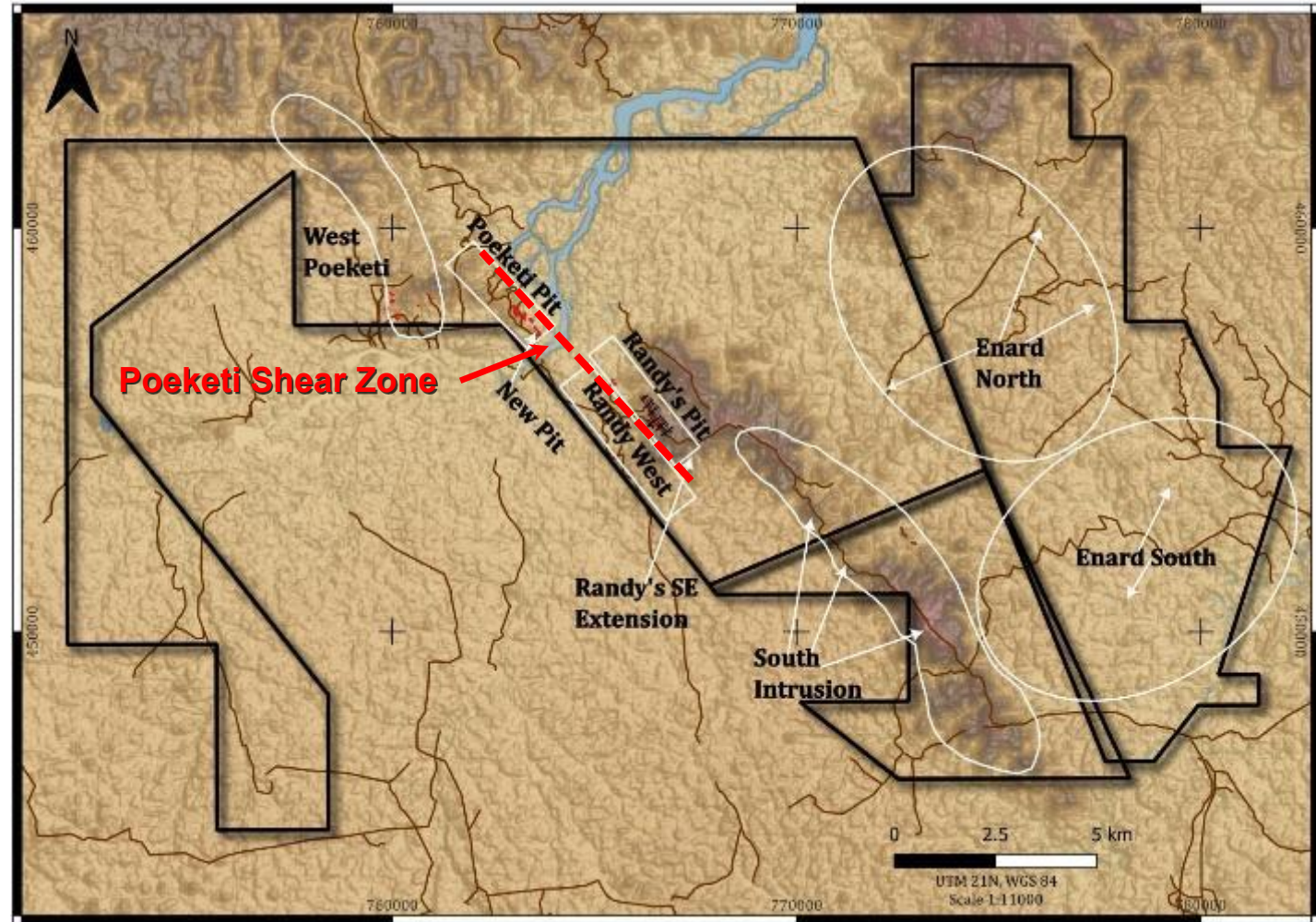
- **MERIAN MINE (75% Newmont & 25% Staatsolie Maatschappij Suriname N.V)**
 - Commenced commercial production in 2016 with ~3.5 Moz Au produced as of Q1 2026
 - Reserves of 4.5 Moz at 1.09 g/t Au (Newmont, Dec. 25)
 - Initially discovered in 2003
- **ROSEBEL MINE (95% Zijin Mining & 5% Surinamese State entity)**
 - Commercial production started in 2004 with ~6.5 Moz Au produced as of year-end 2025
 - Reserves of 5.1 Moz Gold at 0.78 g/t Au (Zijin Dec. 25)
 - R. Bhoelan, Sranan's VP Exploration, involved in the resource development of Saramacca Mine, 25 km from Rosebel



Tapanahony Gold Project



- 29,000 ha Tapanahony Project covers one of Suriname's most productive artisanal mining districts
- Exploration camp with drill logging and storage facilities established by Sranan in 2025
- Artisanal mining used to define and prioritize drilling targets
- IAMGOLD drilled the Randy's pit target in 2011-2012
- Small-scale gold mining 2021-2025
- Geophysics, LiDAR, and geochemistry surveys extended Poeketi Shear Zone and defined new targets



Tapanahony: Exploration History



Over US\$10 million has been spent in past on exploration at Tapanahony

1980s

United Nation Revolving Fund for Natural Resources (UNRF) supported drainage and soil geochemistry studies, which reported elevated gold values in soils (>100 ppb and locally >1,000 ppb gold) at Tapanahony

1993-1997

Golden Star Resources conducted exploration with a pan sampling program, 1-metre shallow auger holes, followed by deep auger holes

2008-2012

IAMGOLD conducted multi phase exploration program culminating with drill program yielding positive results

2020-2021

Concession owner commences mining in saprolites and prepares 43-101 Technical Report

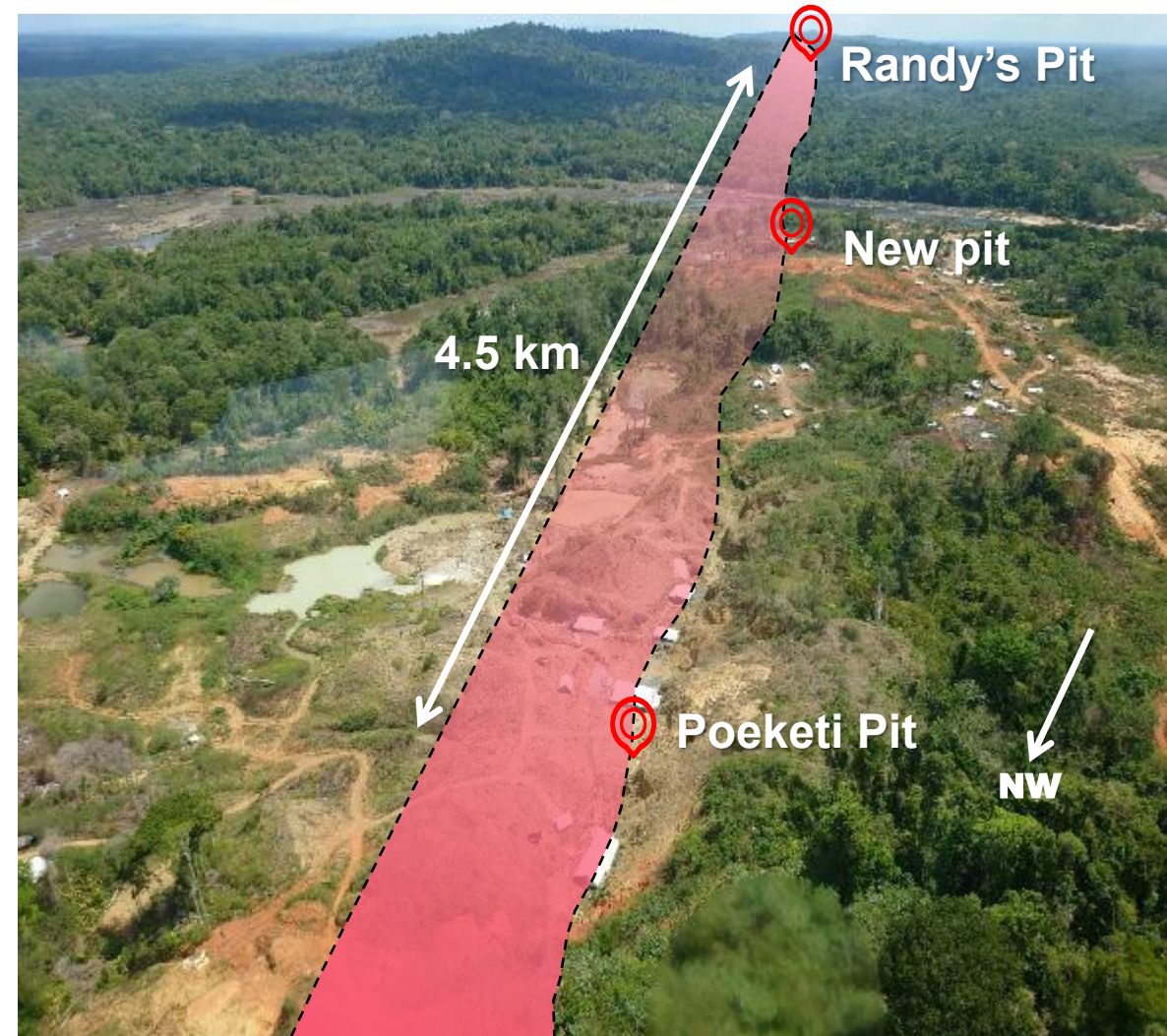
2024 - present

Sranan Gold
2025 - commences exploration incl. diamond drilling

Poeketi Shear Zone - Poeketi Pit and Randy's Pit Targets



- Gold-bearing shear zone extending over 5 km and open along strike.
- Extensive active pits and shallow underground mines operated by artisanal miners along surface of the shear zone
- Mining high-grade gold mineralization hosted in quartz veins
- Sranan's 2025 exploration and drilling focused on the Randy's Pit target
- Small-scale mining activities in the Poeketi Pit area accelerate
- Sranan mobilizes second drill rig to commence drilling in the Poeketi Pit area
 - 5 drill holes completed immediately south of the Poeketi Pit, assays pending

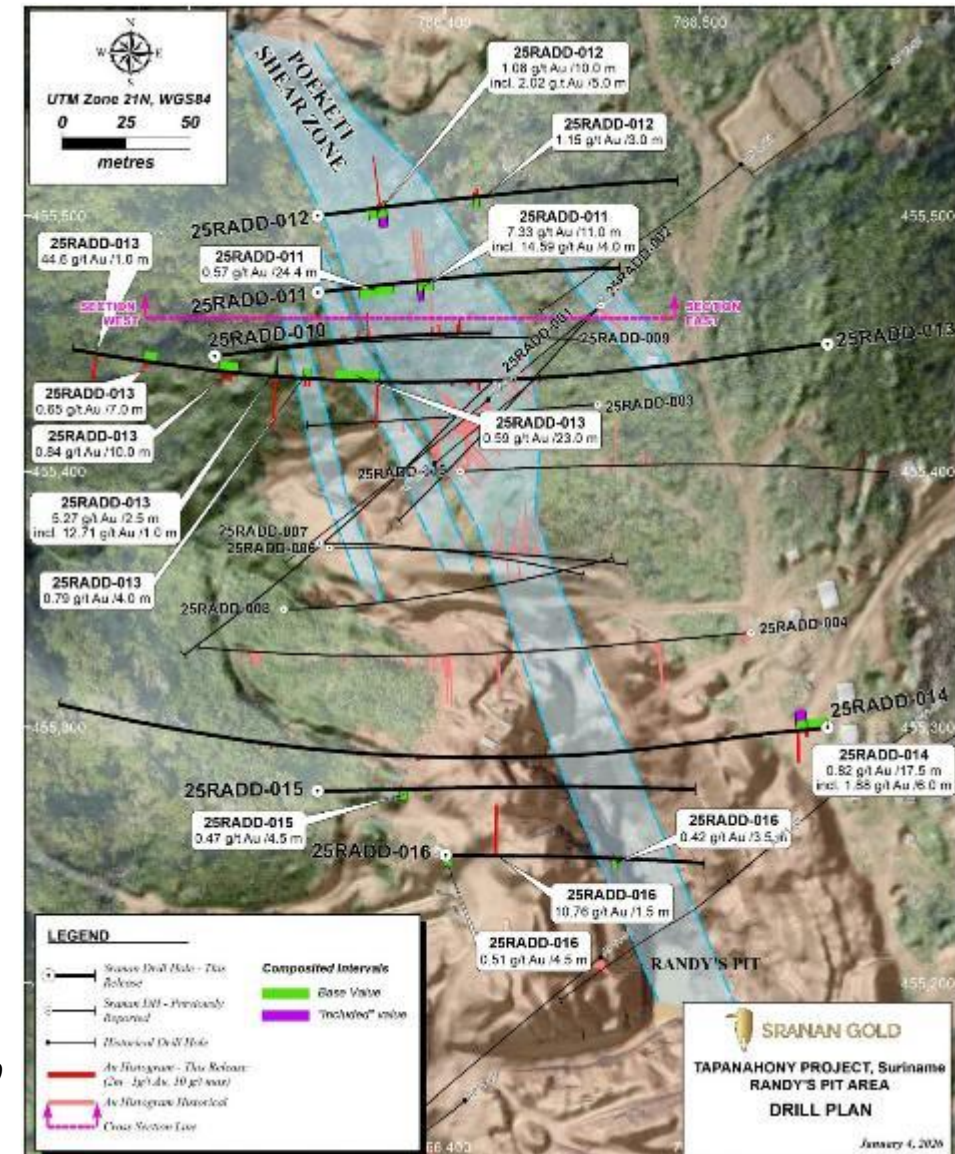


Tapanahony: Drill Assay Highlights, Randy's Pit



| Hole ID | From (m) | To (m) | Interval (m) | Au (g/t) |
|------------------|----------|--------|--------------|----------|
| 25RADD-001 | 23.0 | 34.5 | 11.5 | 3.64 |
| | 29.1 | 30.5 | 1.4 | 21.10 |
| 25RADD-002 | 117.5 | 131.0 | 13.5 | 1.80 |
| 25RADD-003 | 72.0 | 77.0 | 5.0 | 5.60 |
| | 85.0 | 95.5 | 10.5 | 2.70 |
| 25RADD-004 | 51.0 | 54.6 | 3.6 | 7.90 |
| | 161.0 | 225.0 | 64.0 | 3.00 |
| <i>including</i> | 164.0 | 181.0 | 17.0 | 10.5 |
| 25RADD-005 | 73.5 | 85.5 | 12.0 | 1.31 |
| 25RADD-006 | 91.6 | 114.0 | 22.4 | 2.44 |
| 25RADD-007 | 144.0 | 150.0 | 6.0 | 3.82 |
| 25RADD-008 | 138.0 | 146.5 | 8.5 | 1.77 |
| 25RADD-009 | 114.0 | 133.0 | 19.0 | 1.68 |
| 25RADD-010 | 194.0 | 197.0 | 3.0 | 1.74 |
| 25RADD-011 | 28.6 | 53.0 | 24.4 | 0.57 |
| | 69.0 | 80.0 | 11.0 | 7.33 |
| 25RADD-012 | 29.0 | 39.0 | 10.0 | 1.08 |
| 25RADD-013 | 247.0 | 270.0 | 23.0 | 0.59 |
| | 389.5 | 390.5 | 1.0 | 44.6 |
| 25RADD-014 | 0.0 | 17.5 | 17.5 | 0.82 |
| | 11.5 | 17.5 | 6.0 | 1.88 |

Note: weighted average Au grades are based on a 0.3 g/t Au cut-off grade with reported Intervals incorporating no greater than 10 m internal dilution below cut-off grade. Reported Intervals are downhole lengths and do not represent true widths or thickness. True widths are likely to range from about 50% to >85% depending upon the interpretation of the mineralized zones.



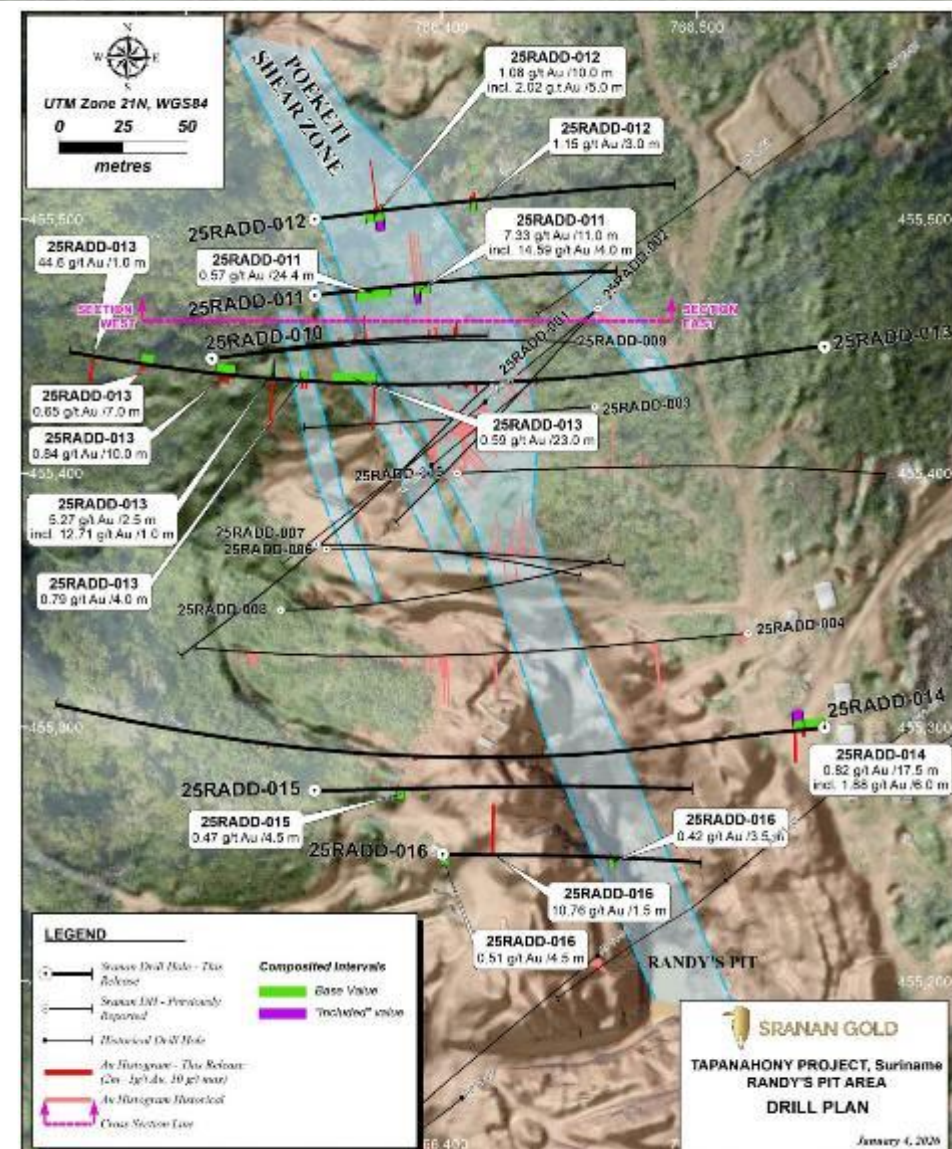
SRAN GOLD
TAPANAHONY PROJECT, Suriname
RANDY'S PIT AREA
DRILL PLAN
 January 6, 2026

Tapanahony: Drill Assay Highlights, Randy's Pit



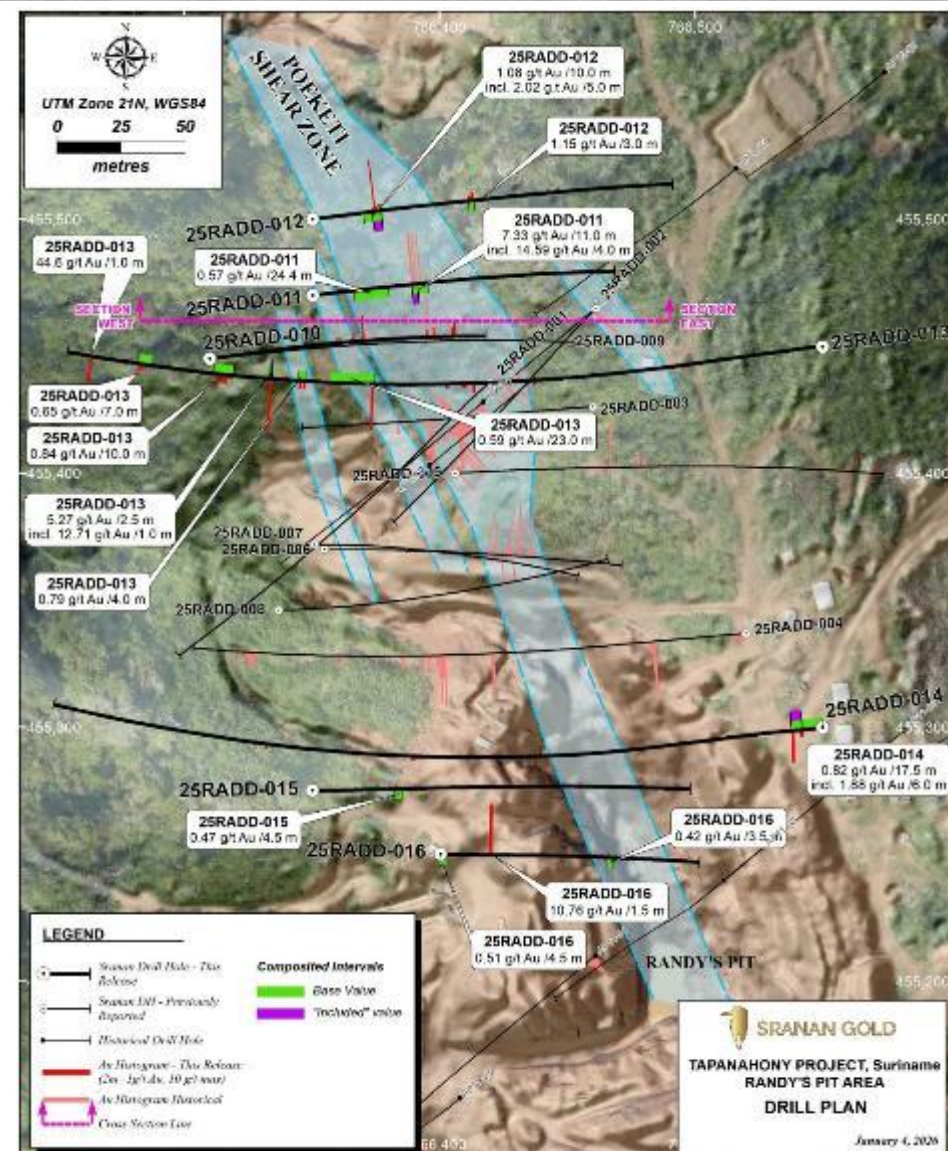
| Hole ID | From (m) | To (m) | Interval (m) | Au (g/t) |
|------------|----------|--------|--------------|----------|
| 25RADD-015 | 46.0 | 50.5 | 4.5 | 0.47 |
| 25RADD-016 | 29.5 | 31.0 | 1.5 | 10.76 |
| 25RADD-017 | 0.0 | 7.5 | 7.5 | 0.55 |
| | 82.8 | 86.0 | 3.2 | 0.64 |
| 25RADD-018 | 10.5 | 12.0 | 1.5 | 2.52 |
| | 37.0 | 38.0 | 1.0 | 10.88 |
| 25RADD-019 | 19.0 | 21.0 | 2.0 | 4.36 |
| Including | 19.0 | 20.0 | 1.0 | 6.77 |
| 26RADD-020 | 51.0 | 61.5 | 10.5 | 0.41 |
| | 72.0 | 74.7 | 2.7 | 0.96 |
| 26RADD-021 | 115.0 | 119.0 | 4.0 | 6.58 |
| Including | 115.0 | 116.0 | 1.0 | 21.80 |
| Including | 118.0 | 119.0 | 1.0 | 3.97 |
| 26RADD-022 | 6.5 | 16.6 | 10.1 | 0.96 |
| | 114.0 | 119.0 | 5.0 | 2.24 |
| Including | 114.0 | 117.0 | 3.0 | 3.42 |
| 26RADD-023 | 99.0 | 107.0 | 8.0 | 1.73 |
| Including | 106.0 | 107.0 | 1.0 | 12.53 |
| | 125.0 | 155.0 | 30.0 | 0.67 |
| Including | 150.0 | 153.0 | 3.0 | 3.78 |

Note: weighted average Au grades are based on a 0.3 g/t Au cut-off grade with reported Intervals incorporating no greater than 10 m internal dilution below cut-off grade. Reported Intervals are downhole lengths and do not represent true widths or thickness. True widths are likely to range from about 50% to >85% depending on the interpretation of the mineralized zones.



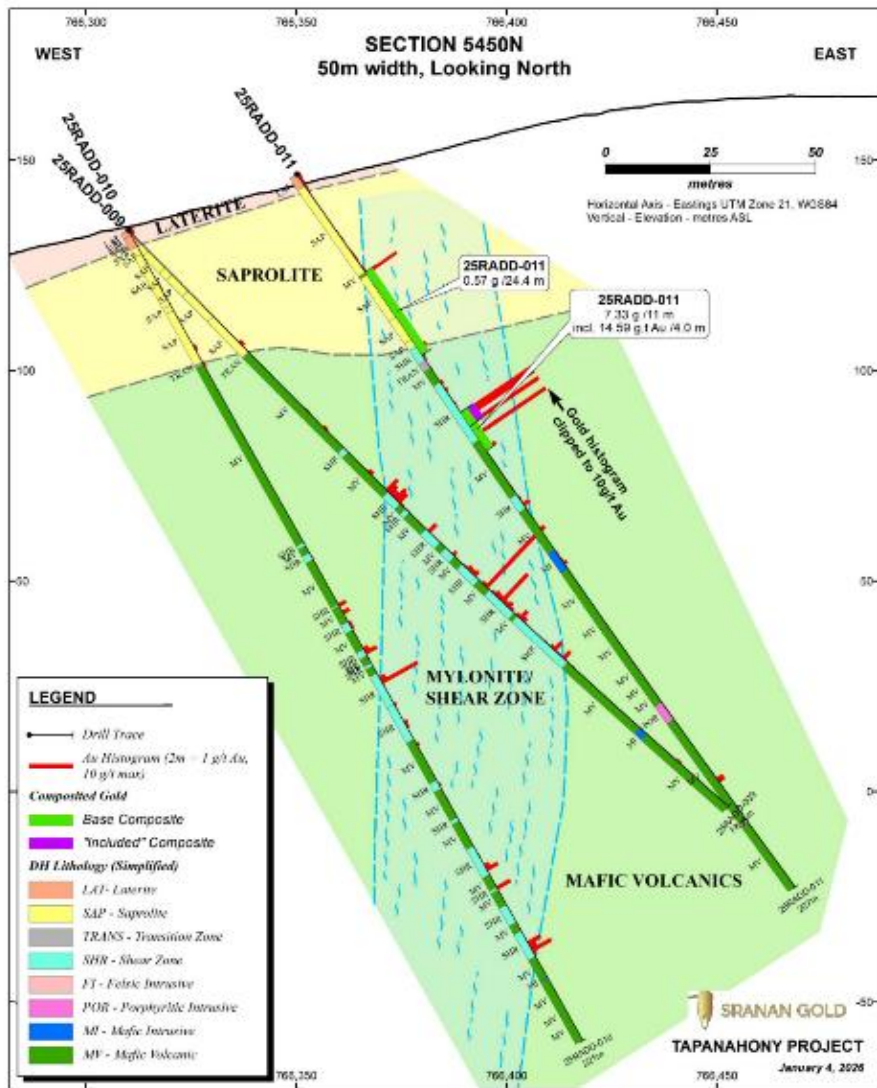
Tapanahony: Drill Assay Highlights, Randy's Pit

| Hole ID | From (m) | To (m) | Interval (m) | Au (g/t) |
|------------|----------|--------|--------------|----------|
| 26RADD-024 | 0.0 | 6.0 | 6.0 | 0.32 |
| 26RADD-025 | 92.5 | 112.5 | 20.00 | 1.33 |
| 26RADD-026 | 68.0 | 75.5 | 7.5 | 1.22 |
| 26RADD-027 | 40.5 | 55.5 | 15.0 | 0.47 |



Note: weighted average Au grades are based on a 0.3 g/t Au cut-off grade with reported Intervals incorporating no greater than 10 m internal dilution below cut-off grade. Reported Intervals are downhole lengths and do not represent true widths or thickness. True widths are likely to range from about 50% to >85% depending on the interpretation of the mineralized zones.

Tapanahony: Cross Section 5450N – Randy’s Pit



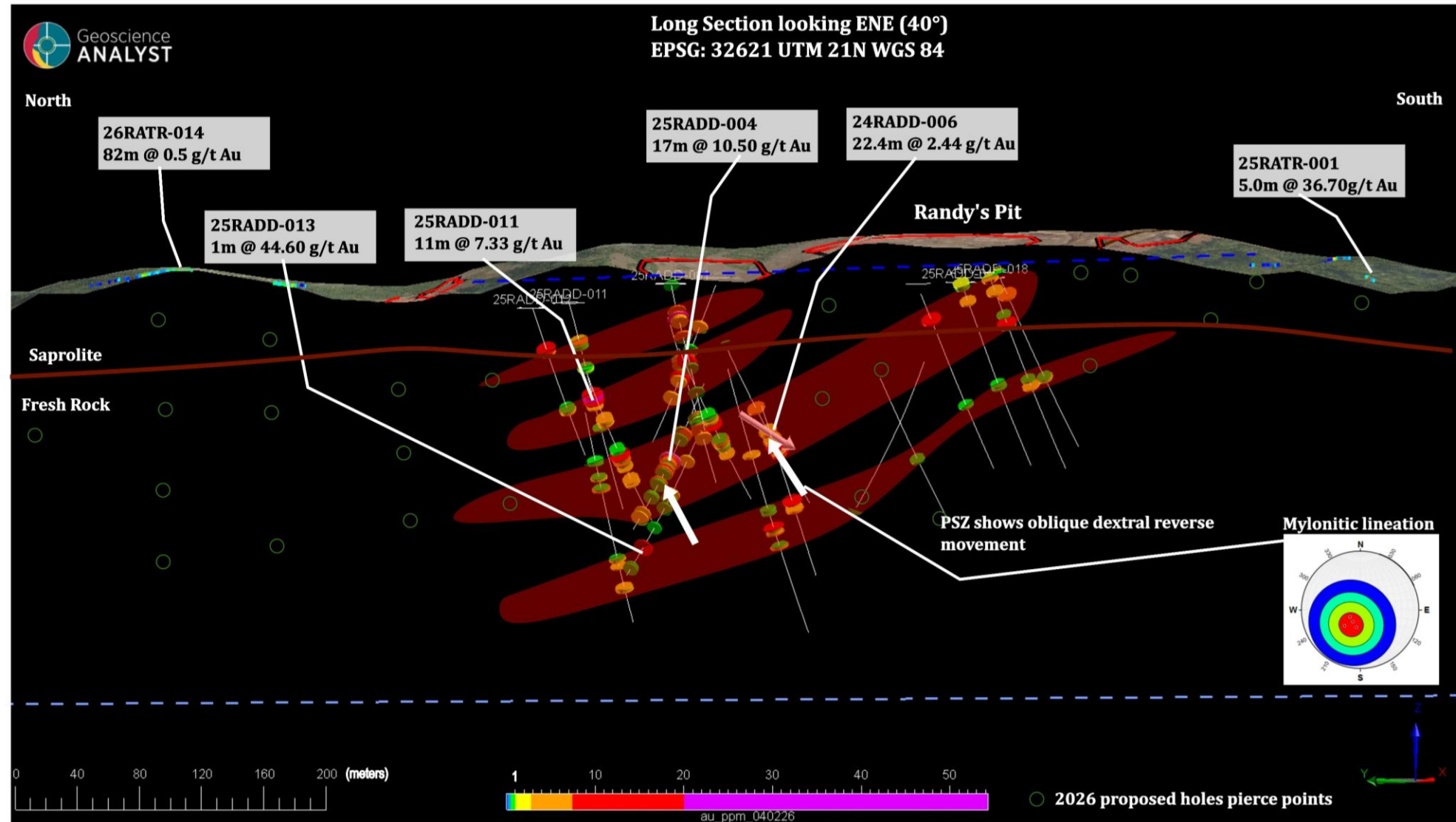
- Gold mineralization traced 200 m below surface
- Hosted in silicified sheared/mylonitic basalts with visible gold
- 50 m thick saprolite is the focus of artisanal U/G mining

| SECTION 5450 N HIGHLIGHTS | | | | |
|---------------------------|----------|--------|--------------|----------|
| Hole ID | From (m) | To (m) | Interval (m) | Au (g/t) |
| 25RADD-009 | 114.0 | 133.0 | 19.0 | 1.68 |
| 25RADD-010 | 194.0 | 197.0 | 3.0 | 1.74 |
| 25RADD-011 | 28.6 | 53.0 | 24.4 | 0.57 |
| and | 69.0 | 80.0 | 11.0 | 7.33 |

- Poeketi Shear Zone extends from the Randy’s Pit 4.5 km to the northwest and the Poeketi gold zone
- Mineralization remains open in both directions

Note: weighted average Au grades are based on a 0.3 g/t Au cut-off grade with reported Intervals incorporating no greater than 10 m internal dilution below cut-off grade. Reported Intervals are downhole lengths and do not represent true widths or thickness. True widths are likely to range from about 50% to >85% depending upon the interpretation of the mineralized zones.

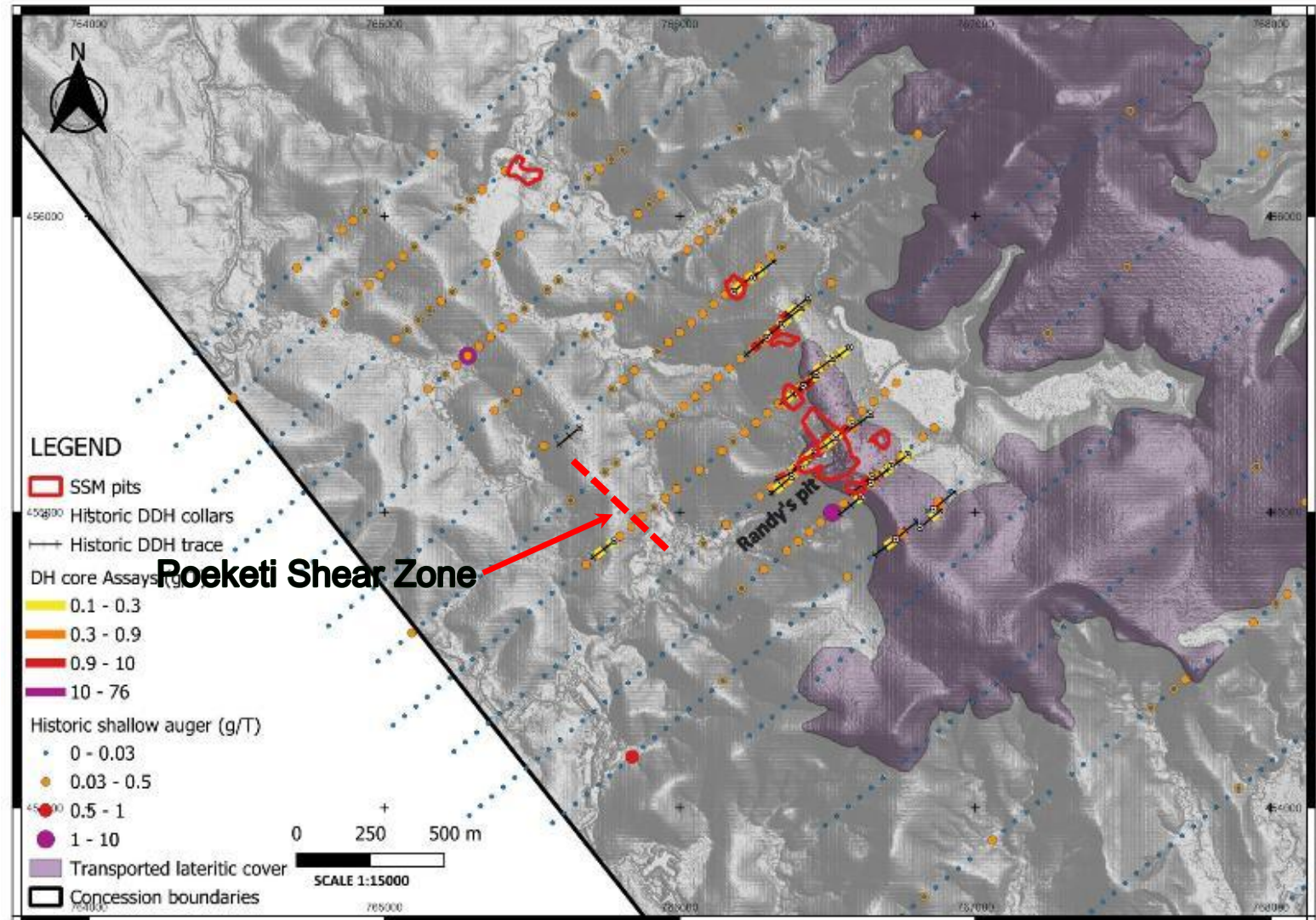
Tapanahony: Randy's Pit Zone Long Section



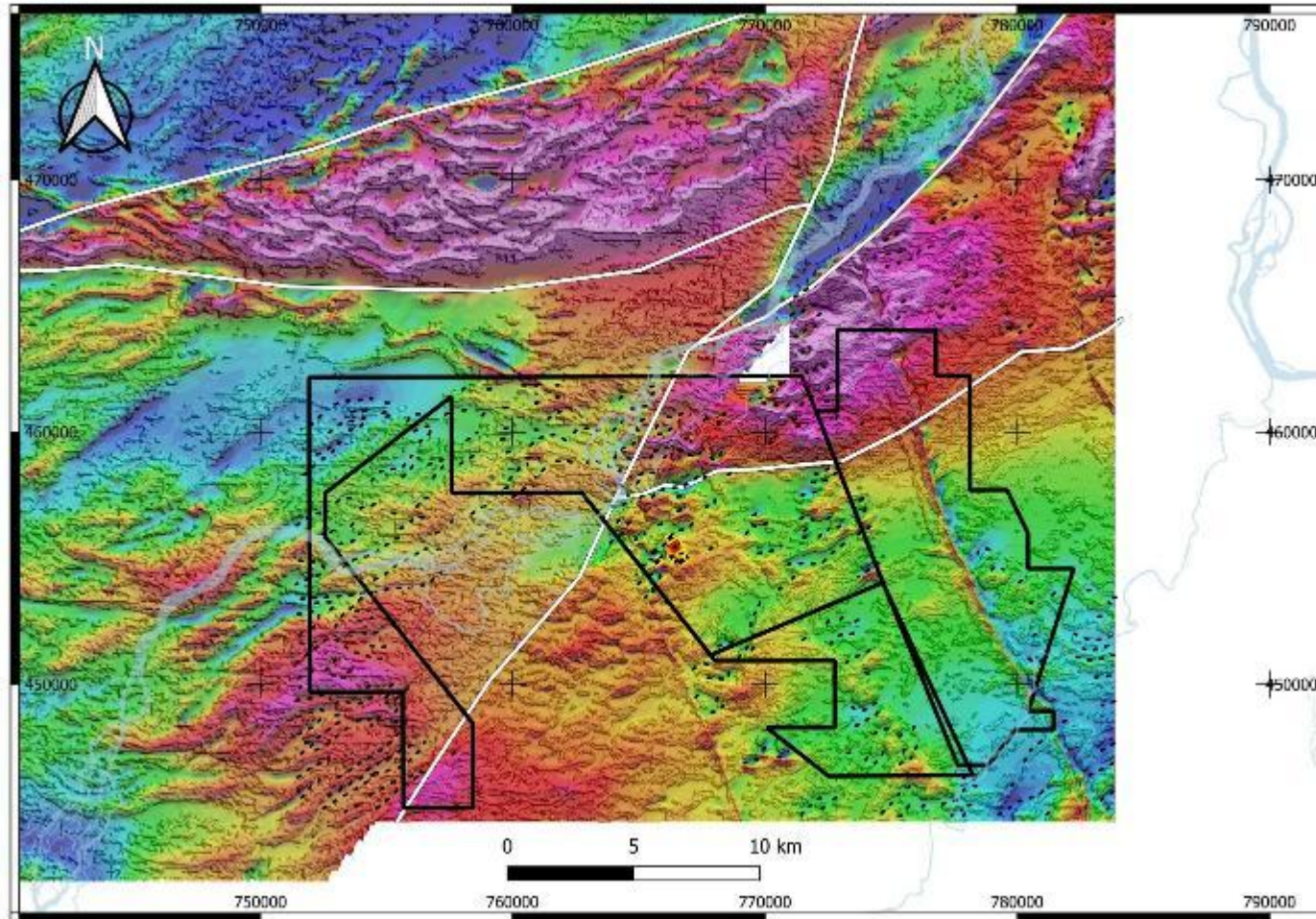
- Poeketi Shear Zone (PSZ) is mylonite within folded and strained basalt
- PSZ is an oblique dextral reverse shear zone
- High-grade lenses are dipping NW along shear fabric
- PSZ shows progressive strain with pre- and post-shear extensional vein sets
- Visible gold often seen along shear planes

Tapanahony: Regional Aeromagnetic Surveys

- Large-scale litho-structural contacts are displaced by dextral NE-SW fault along the Tapanahony river
- NE striking property-scale trend is cross-cut by penetrative NW-SE striking fabrics that crenulated the first deformation event, which creates a favourable environment for deposition of gold mineralization.



Tapanahony: Additional Exploration Targets Identified



- Randy's Pit is the initial priority for drilling, which is based on historical drilling by IAMGOLD and later artisanal mining
- Additional targets recently identified by a combination:
 - LiDAR survey
 - historical exploration data
 - geophysics
 - geological fieldwork

Tapanahony: Drilling Update (June 2026)



Poeketi Pit

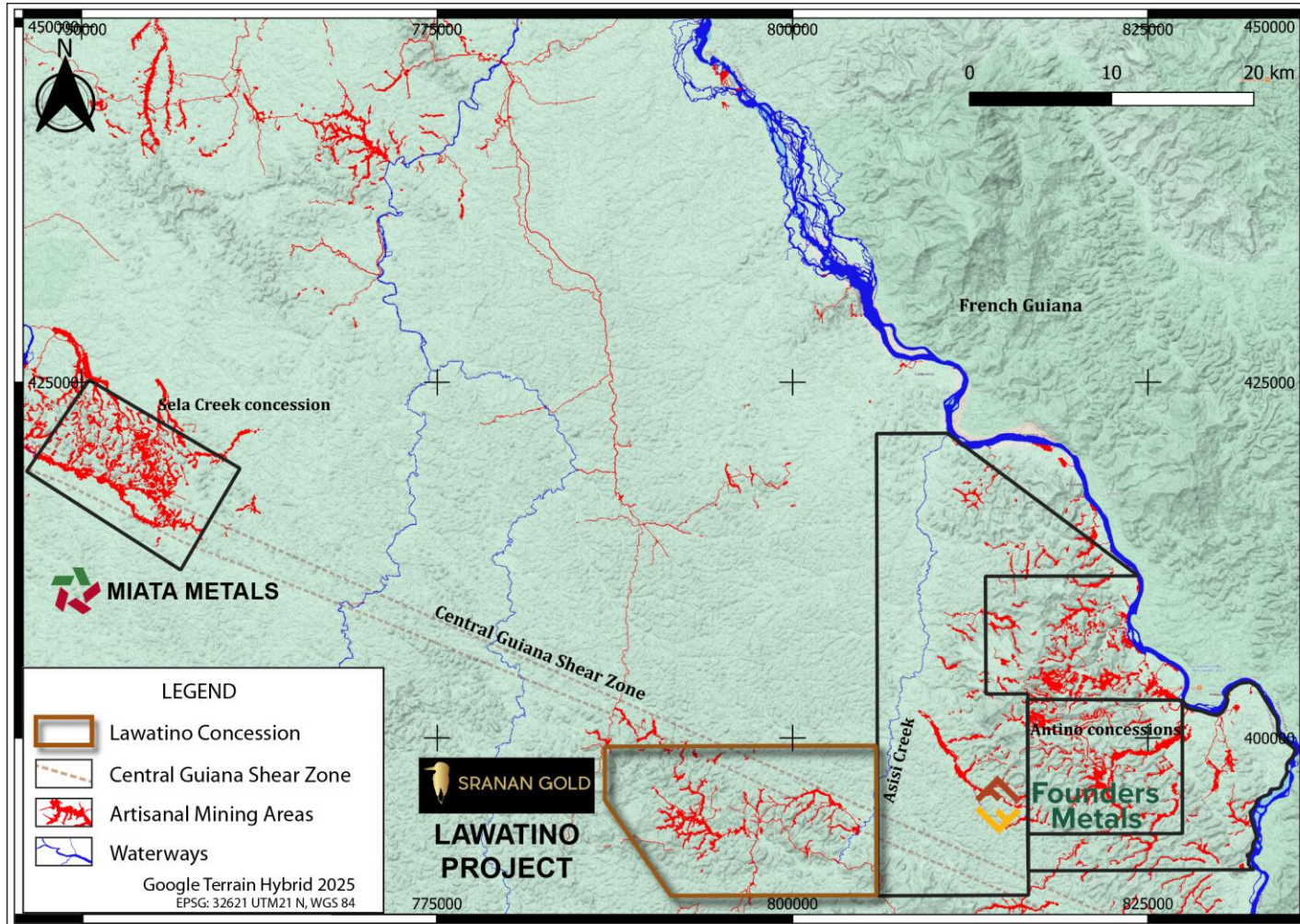
POEKETI PIT DRILLING

- Five holes completed at the Poeketi Zone sixth hole in progress – assay pending
- Drilling tests a ~1 km mineralized corridor where artisanal miners extract high-grade coarse gold from pits and shallow underground workings
- Gold hosted in silicified zones and quartz veins with sulphides within sheared basalts

RANDY'S PIT DRILLING

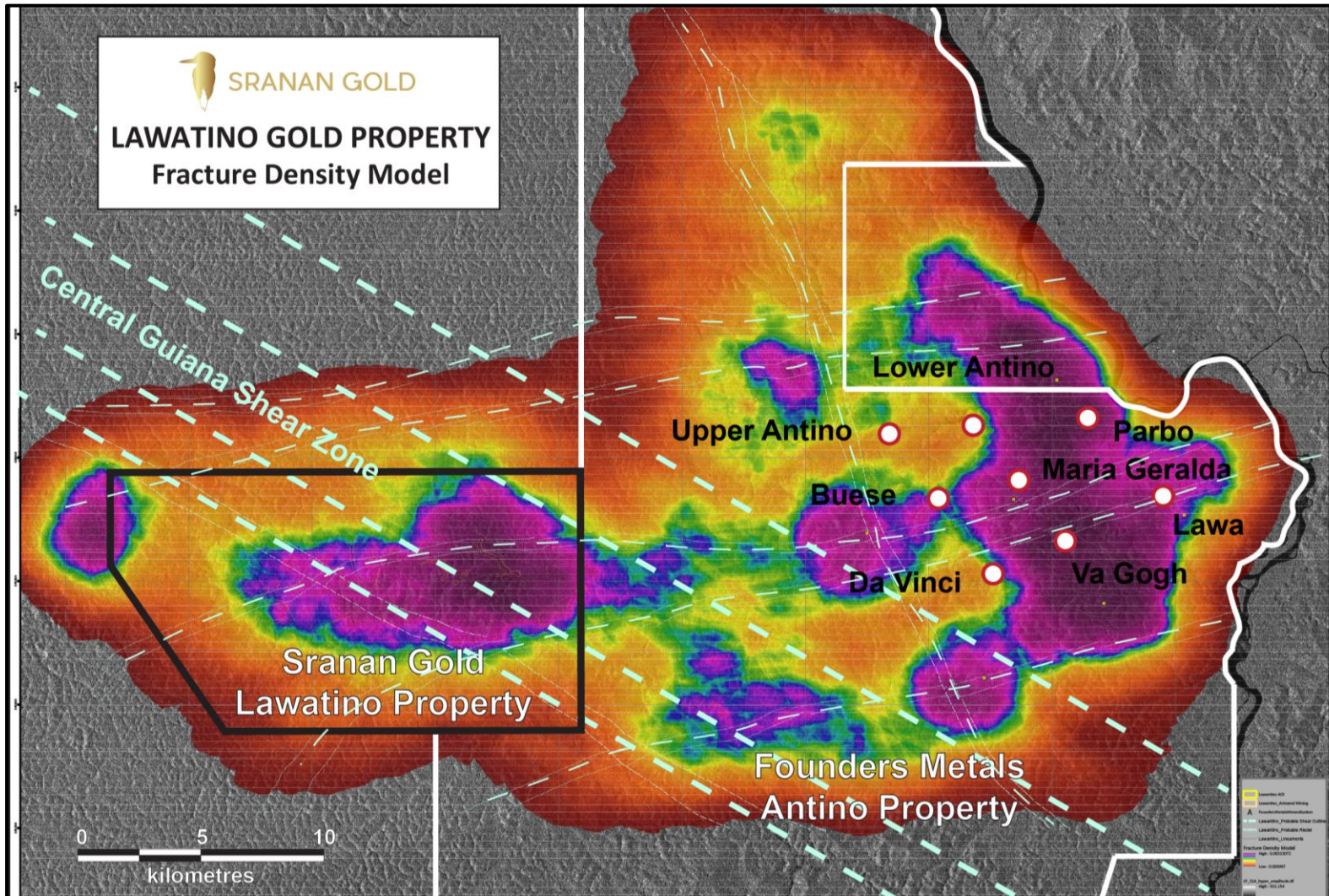
- Nine additional holes completed at Randy's Pit – assays pending
- Randy's Pit mineralization traced over 800 m along the Poeketi Shear Zone
- Mineralization remains open along strike and to depth

Lawatino Gold Project – Sranan’s Newest Acquisition



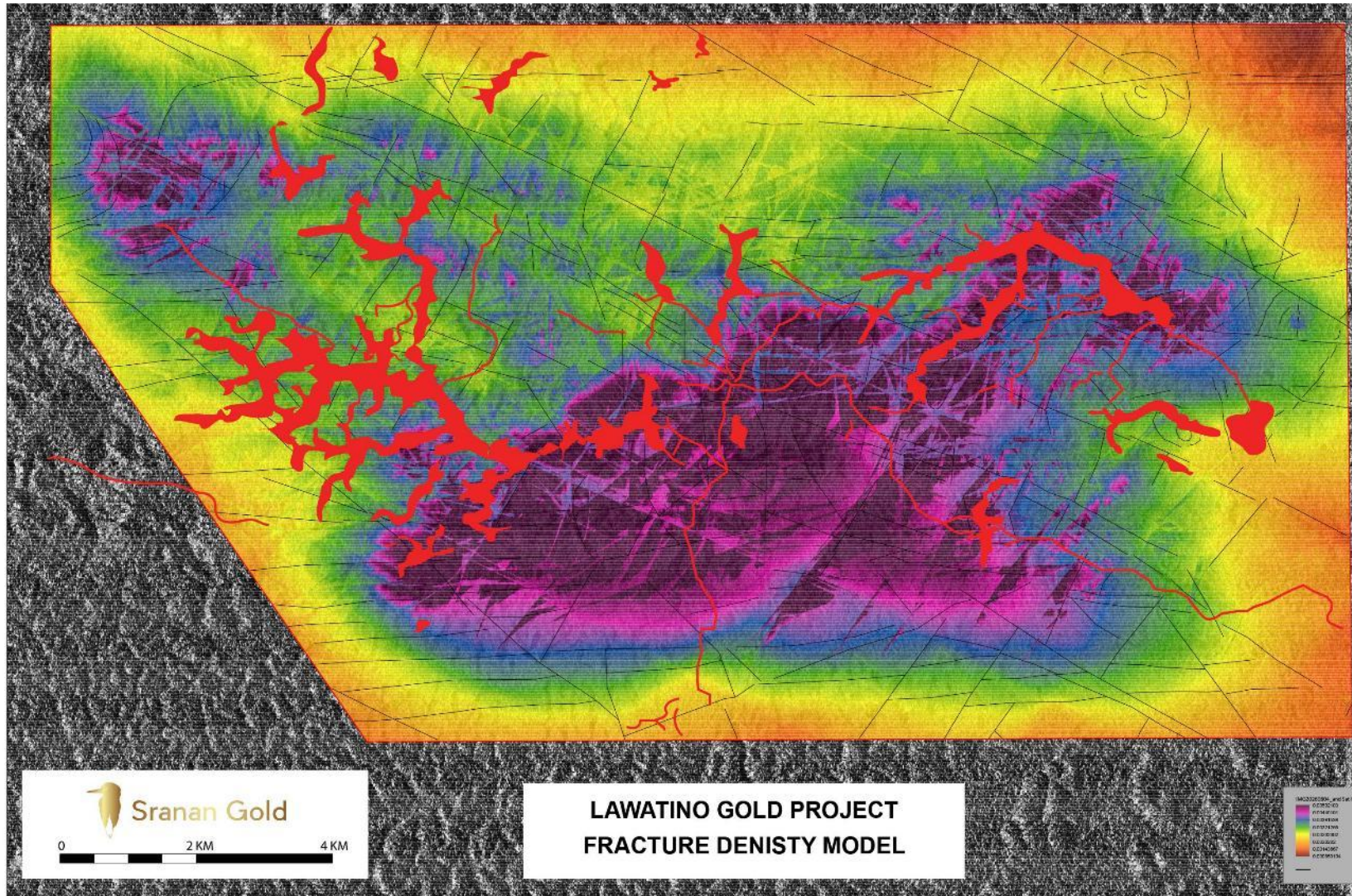
- 18,468 ha of highly prospective land
- Located along the Central Guiana Shear Zone (CGSZ)
- Regional deformation zone associated with late movements that influenced mineralization at Founders Metals’ Antino and Miata Metals’ Sela Creek projects
- Extensive artisanal mining within the drainages
- Two samples from quartz veins collected by Sranan returned values of 4.24 and 1.88 g/t Au
- Fracture Density Model recently completed
- Field crews mobilized to commence geological mapping, soil sampling, trenching and channel sampling

Lawatino concession-MUD® SAR Technology



- Fracture density map showing structural preparation for gold
- Central Guiana Shield Shear Zone cuts concession
- CGSZ is a first order structure controlling gold at Sela Creek (Miata) and Antino (Founders)

Lawatino: Fracture Density Model



- Fracture density map showing potential structure controls for gold deposition
- Purple areas represent the highest fracture density
- Northwest-southeast linears correspond to the regional Central Guiana Shield Shear Zone
- Areas of alluvial mining (red) correlate directly to areas or downstream from areas of high fracture density

2026 Exploration Activities - Looking Ahead



Tapanahony Gold Project

Drilling Continues

- **Randy's Pit** – trace mineralized shear zone north and south of the Randy's Pit
- **Poeketi Pit** – 5,000 metres of drilling planned
- **Property Exploration** – continue mapping, sampling and trenching the “additional” targets area. Ground proofing in preparation for drilling

Lawatino Gold Project

Preparing for Drilling

- Geological mapping, soil auger sampling, and sampling on exposures and trenches
- Logistics and mobilization for drilling equipment and associated facilities
- Remote sensing and airborne geophysics



Sranan Gold Investment Highlights



2 highly prospective gold projects in Suriname establish gold belts



Highly experienced management team with a long history of exploration activities in Suriname



Recently completed \$3.6 M private placement



Active exploration programs supplying a steady flow of news

- Diamond drilling at Tapanahony
- Trenching and geological sampling at Lawatino in preparation for drilling in late 2026

| Sranan - Capital Structure | Shares (millions) |
|-----------------------------------|------------------------------|
| Shares Outstanding | 93.82 |
| Options | 7.70 |
| Warrants | 14.24 |
| Shares Fully Diluted | 115.76 |

| Major Shareholders | % |
|-------------------------------------|----------|
| Metals Group, Management & Insiders | 6.5 |
| Mackenzie Investments | 4.6 |
| 1832 Asset Management (Scotia) | 4.5 |
| Retail Shareholders | 84.0 |

Contact Us

For any questions or clarifications on our presentation.

Oscar Louzada, CEO
oscar@sranangold.com
+31 6 25438975
1-647-873-2823

www.sranangold.com

