



SRANAN GOLD

Exploring the Heart of Suriname's Modern-Day Gold Rush

March 2026



Forward Looking Statement

Legal Disclaimer

This presentation of Sranan Gold Corp. ("Sranan" or the "Company") is for information only and shall not constitute an offer to buy, sell, issue or subscriber for, or the solicitation of an offer to buy, sell, issue or subscribe for any securities in any jurisdiction. The information contained herein is subject to change without notice and is based on publicly available information, internally developed data and other sources. Where any opinion or belief is expressed in this presentation, it is based on the assumptions and limitations mentioned herein and is an expression of present opinion or belief only. No warranties or representations can be made as to the origin, validity, accuracy, completeness, currency or reliability of the information. The Company disclaims and excludes all liability (to the extent permitted by law) for losses, claims, damages, demands, costs and expenses of whatever nature arising in any way out of or in connection with the information in this presentation, its accuracy, completeness or by reason of reliance by any person on any of it. This presentation should not be construed as legal, financial or tax advice to any individual, as each individual's circumstances are different. Readers should consult with their own professional advisors regarding their particular circumstances. There are certain risks inherent in an investment in the securities of the Company that prospective investors should carefully consider before investing in the securities of the Company.

Forward Looking Statements

This presentation contains "forward-looking information" within the meaning of applicable Canadian securities legislation and "forward-looking statements" within the meaning of applicable United States securities legislation, together, "forward-looking statements". Such forward-looking statements contain known and unknown risks, uncertainties, and other factors that may cause our actual results, performance, or achievements, or developments within our industry, to differ materially from the anticipated results, performance, or achievements expressed or implied by such forward-looking statements. Forward-looking statements are statements that are not historical facts and are generally, but not always, identified by the words "expects", "aims", "plans", "anticipates", "believes", "intends", "estimates", "projects", "potential", and similar expressions, or that conditions "will", "would", "may", "could", or "should" occur. Forward-looking statements included in this presentation include, but are not limited to: statements with respect to the Company's expectations regarding drilling and exploration activities on properties in which the Company has or may acquire an interest; and information with respect to the Company's continued exploration programs (including size and budget). Information inferred from the interpretation of exploration results and information concerning potential mineralization may also be deemed to be forward-looking statements, as such information constitutes a prediction of what might be found to be present if a project is actually developed. There can be no assurance that such statements will prove to be accurate. Actual results and future events may differ materially from those anticipated in such statements and readers are cautioned not to place undue reliance on these forward looking statements that speak only as of their respective dates. Important factors that could cause actual results to differ materially from the Company's expectations could include among others: risks related to fluctuations in mineral prices; uncertainties related to raising sufficient financing to fund planned work in a timely manner and on acceptable terms; changes in planned work resulting from weather, logistical, technical, or other factors; risks associated with emerging and developing markets; the possibility that results of work will not fulfill expectations and realize the perceived potential of the properties in question; political uncertainty and other risks of doing business in Suriname; the Company's inability to obtain property rights and interests as currently proposed or at all; uncertainties in the estimation of any potential future mineral resources or reserves; the possibility that required permits may not be obtained in a timely manner or at all; the possibility that capital and exploration costs may be higher than estimated and may preclude or render future exploration and development uneconomic; risk of accidents, equipment breakdowns or labour disputes or other unanticipated difficulties or interruptions; the possibility of cost overruns or other unanticipated expenses in work programs; the risk of environmental contamination or damage resulting from the Company's operations; risks associated with title to mineral properties; risk associated with the COVID-19 pandemic; and other risks and uncertainties discussed elsewhere in the Company's documents made publicly available from time to time. These statements are based on a number of assumptions; including assumptions regarding general market conditions, the availability of financing for proposed transactions and programs on reasonable terms, and the ability of outside service providers to deliver services in a satisfactory and timely manner. Forward-looking statements are based on the beliefs, estimates, and opinions of the Company's management on the date the statements are made. Except as expressly required by applicable securities laws the Company undertakes no obligation to update these forward-looking statements in the event that managements beliefs, estimates, opinions or other factors, should change.

Public Data

This presentation also contains or references certain industry data which is based upon information from independent industry publications, market research, analyst reports and surveys and other publicly available sources. Although the Company believes these sources to be generally reliable, such information is subject to interpretation and cannot be verified with complete certainty due to limits on the availability and reliability of raw data, the voluntary nature of the data gathering process and other inherent limitations and uncertainties. The Company has not independently verified any of the data from third party sources referred to in this presentation and accordingly, the accuracy and completeness of such data is not guaranteed.

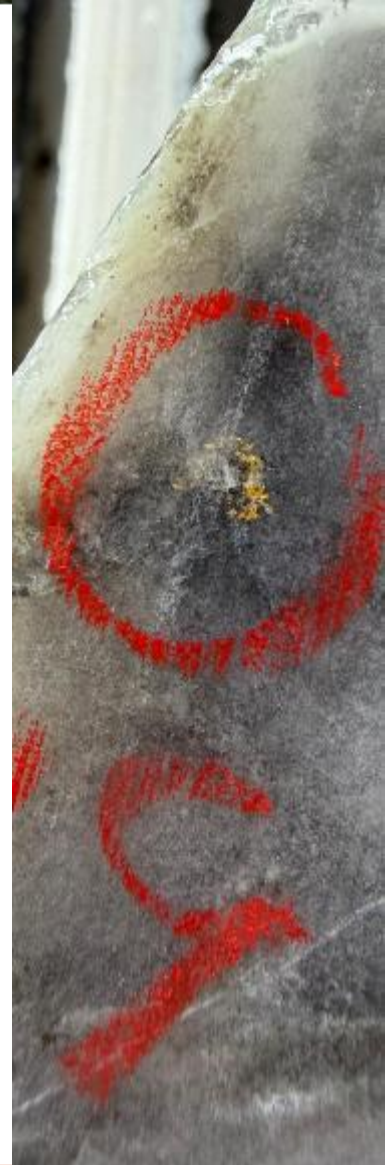
Qualified Person

Mr. Michael Dufresne, M.Sc., P.Geol., P.Geo. Is an independent "qualified person" as defined under National Instrument 43-101, has reviewed and approved the scientific and technical information in this presentation. Mr. Dufresne has verified the data disclosed in this presentation and no limitations were imposed on his verification process.

Sranan Gold – A “New” Surinamese Explorer



- Actively exploring the prospective Tapanahony Gold Project in the Guiana Shield
- Extensive artisanal mining along the 4.5 km trend along the Poeketi Shear Zone
- Sranan Gold commenced exploration in 2025
- 4,189 m of diamond drilling completed in 2025. started in 3rd quarter of 2025
- Significant drill results from Randy’s Pit target include:
 - 3.00 grams per tonne (g/t) gold (Au) over 64.0 meters (m) including 17 m @ 10.50 g/t Au (25RADD-04)
 - 2.44 g/t Au over 22.4 m (25RADD-006)
 - 7.33 g/t Au over 11.0 m (25RADD-011)
 - 44.60 g/t Au over 1.0 m (25RADD-013)
- 2026 drilling has begun with plans for a second drill rig at the Poeketi target during Q2
- Management has a long history in-country exploration success



A Management Team Built for Success



Oscar Louzada

CEO & DIRECTOR

Resource-focused executive with over 25 years international experience, including the past 12 years in Suriname.

Previously worked with Beeson Gregory (Investec) and Canaccord Genuity helping finance numerous exploration and development companies in the natural resources sector with a particular focus on South America, Central Asia, Africa and Europe.

Has been a principal of three natural resources companies: exploration in Suriname gold (Sumin Resources); production of fertilizer (Uzbekistan); and an 8,000 tpa copper cathode production company in the US (Idaho).

Fluent in Dutch, the primary language of Suriname.



Rayiez Bhoelan

VP OF EXPLORATION

Experienced exploration geologist with over a decade of Guiana Shield exploration specializing in structural controls of complex orogenic gold deposits.

Formerly responsible for driving greenfield exploration, geochemistry, and field mapping for lamgold's Suriname regional exploration and key team member at lamgold's Pikin Saramacca project; fast-tracked exploration towards 1.5 million ounces of P&P gold.

Held senior roles with Omai Gold Mines and other companies and former senior consulting geologist at Founder Metals Inc.

Part-time lecturer in geochemistry at Anton de Kom University of Suriname.

Experienced Support and Direction

Mario Stifano **Independent Director & Audit Committee Chair**

Seasoned mining executive and Chartered Professional Accountant with 25 years of experience across exploration, development, and producing mining companies. Currently CEO of Galantas Gold and Executive Chairman of Doré Copper Mining Corp., with prior senior leadership roles including CEO of Cordoba Minerals, Executive Chairman of Mega Precious Metals, and VP & CFO at Lake Shore Gold and Ivernia. Instrumental in raising \$700M+ to advance mining projects, including leading the team that acquired, financed, and listed the historic Omai Mine in Guyana in 2020.

Ron Halas **Independent Director**

Canadian mining engineer with more than 35 years of international experience including 5 years in Suriname as IAMGOLD's Vice President, Commercial - South America. He was an integral part of the team that negotiated for the acquisition of the Saramacca concession for IAMGOLD's Rosebel Gold Mine. As CEO of Global Atomic Corp., Mr. Halas advanced the Dasa uranium project from PEA to mine development in approximately 2.5 years, and as COO of Lumina Gold Corp., he delivered the Cangrejos feasibility study ultimately leading to Lumina's \$581 million sale to CMOC Group Limited in 2025.

Oscar Louzada **Director & CEO**

Resource-focused executive with over 25 years international experience, including the past 12 years in Suriname. Mr. Louzada has significant banking experience working for Beeson Gregory and Canaccord and has been a principal in a number of resource companies

Ron Shenton **Independent Director**

Capital markets professional with 40 years of experience, beginning as an investment advisor at a national brokerage firm before moving to a regional platform. Founder of multiple public companies, he has served as CEO and director, led investor and public relations, and raised growth capital across sectors—primarily mining exploration, with additional experience in biotech, cybersecurity, technology, and oil and gas.

John Alcock **Director & CFO**

Chartered Professional Accountant with over 30 years of accounting and finance experience, including extensive investing in the junior mining sector. Currently serves on the board of Altiplano Metals.

Guiana Shield - Gold Project and Mines



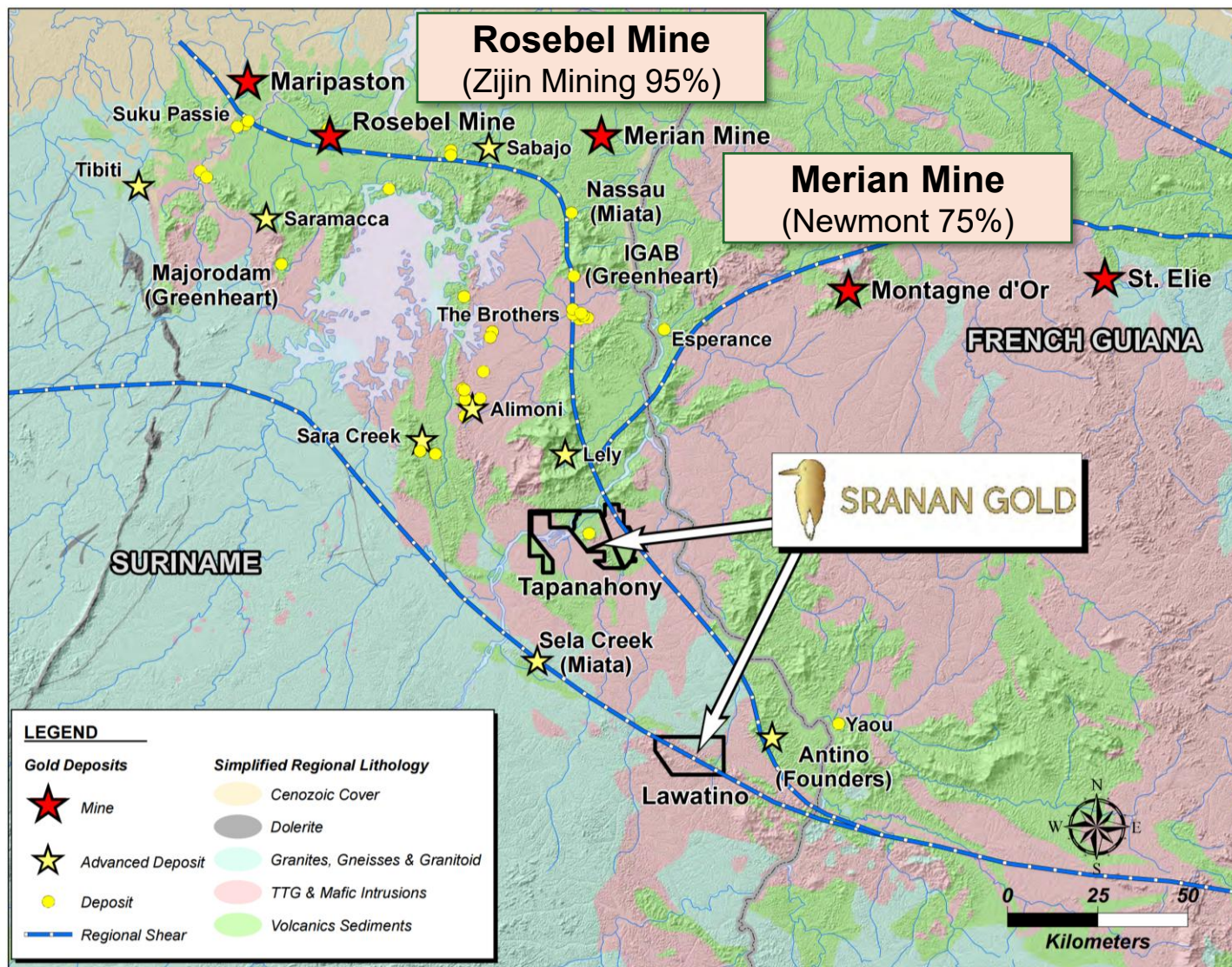
Two major gold mines are currently operating in Suriname:

MERIAN MINE (75% Newmont & 25% Staatsolie Maatschappij Suriname N.V)

- Commenced commercial production in 2016 with 3.4 million troy ounces (Moz) Au produced as of Q3 2024* Proven & Probable Reserves of 4.1 Moz at 1.16 g/t Au**

ROSEBEL MINE (95% Zijin Mining & 5% Surinamese State entity)

- Commercial production started in 2004 with 6.2 Moz Au produced as of year-end 2024^
- Reserves of 6.3 Moz Gold at 1.04 g/t Au (Zijin Dec 2024) ^^
- Rayiez Bhoelan, Sranan's VP Exploration, involved in the resource development of Saramacca Mine.



* Newmont Corporation Q3 2024 Earnings Release and 10-Q filing

* Newmont-Reports-2024-Mineral-Reserves-of-134.1-Million-Gold-Ounces-and-13.5-Million-Tonnes-of-Copper

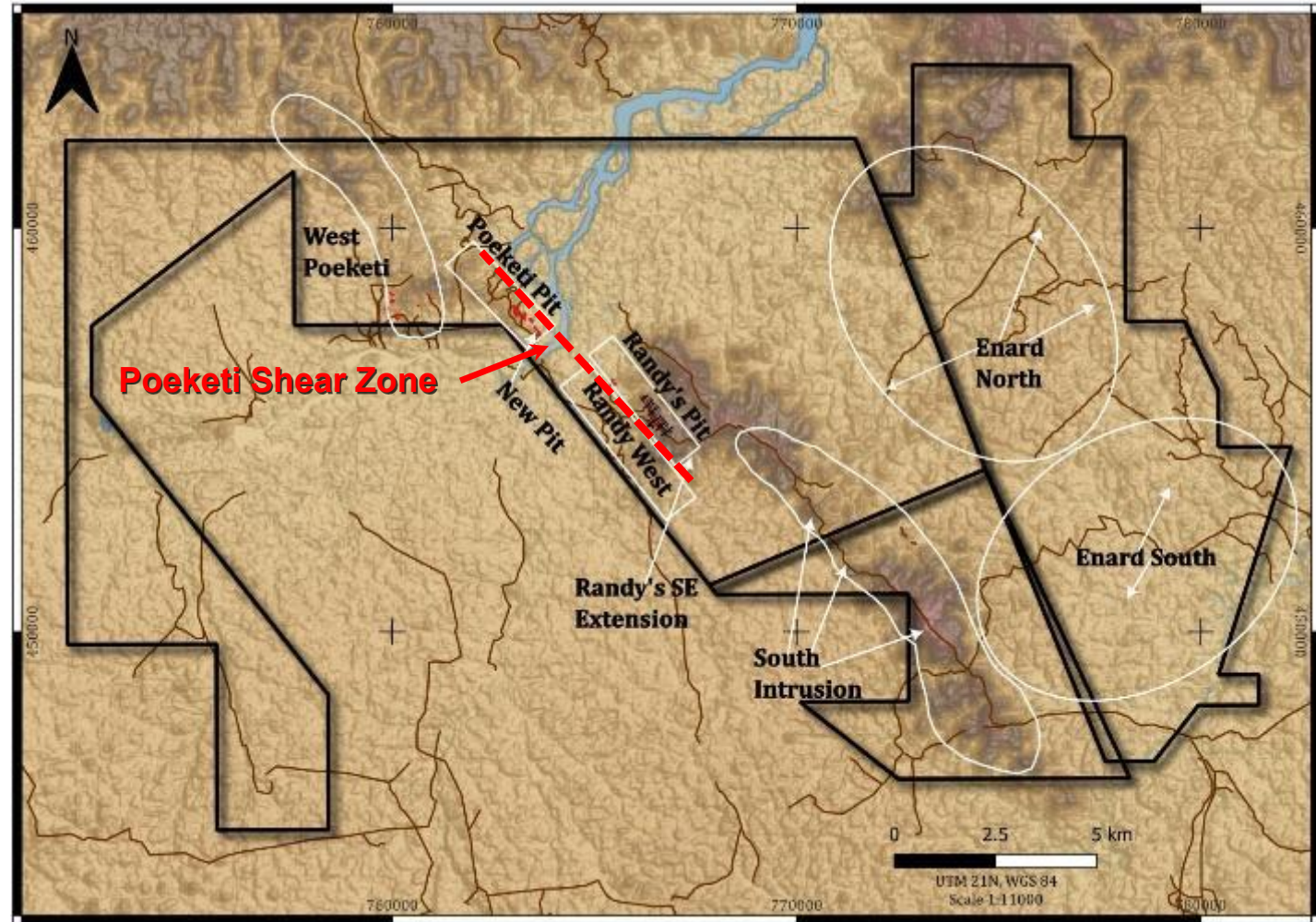
^ <https://www.rosebelgoldmines.sr/about-us/> and <https://www.zijinmining.com/investor/2024-newyeji.htm>

^^ <https://cdn-ceo-ca.s3.amazonaws.com/1ju28i0-2024%2BAnnual%2BResults.pdf>

Sranan's Tapanahony Gold Project



- 29,000 ha Tapanahony Project covers one of Suriname's most productive small-scale mining districts
- Exploration camp with drill logging and storage facilities established by Sranan in 2025
- Artisanal mining helped to define and prioritize drilling targets
- IAMGOLD drilled the Randy's pit target in 2011-2012, followed by small-scale gold mining in 2021-2025
- Geophysics, LiDAR, and geochemistry survey expanded Poeketi Shear Zone and has helped to define new targets



Exploration History of Tapanahony



Over US\$10 million has been spent in past on exploration at Tapanahony

1980s

United Nation Revolving Fund for Natural Resources (UNRF)
supported drainage and soil geochemistry studies, which reported elevated gold values in soils (>100 ppb and locally >1,000 ppb gold) at Tapanahony

1993-1997

Golden Star Resources
conducted exploration with a pan sampling program, 1-metre shallow auger holes, followed by deep auger holes

2008-2012

Iamgold conducted multi phase exploration program culminating with drill program yielding positive results

2020-2021

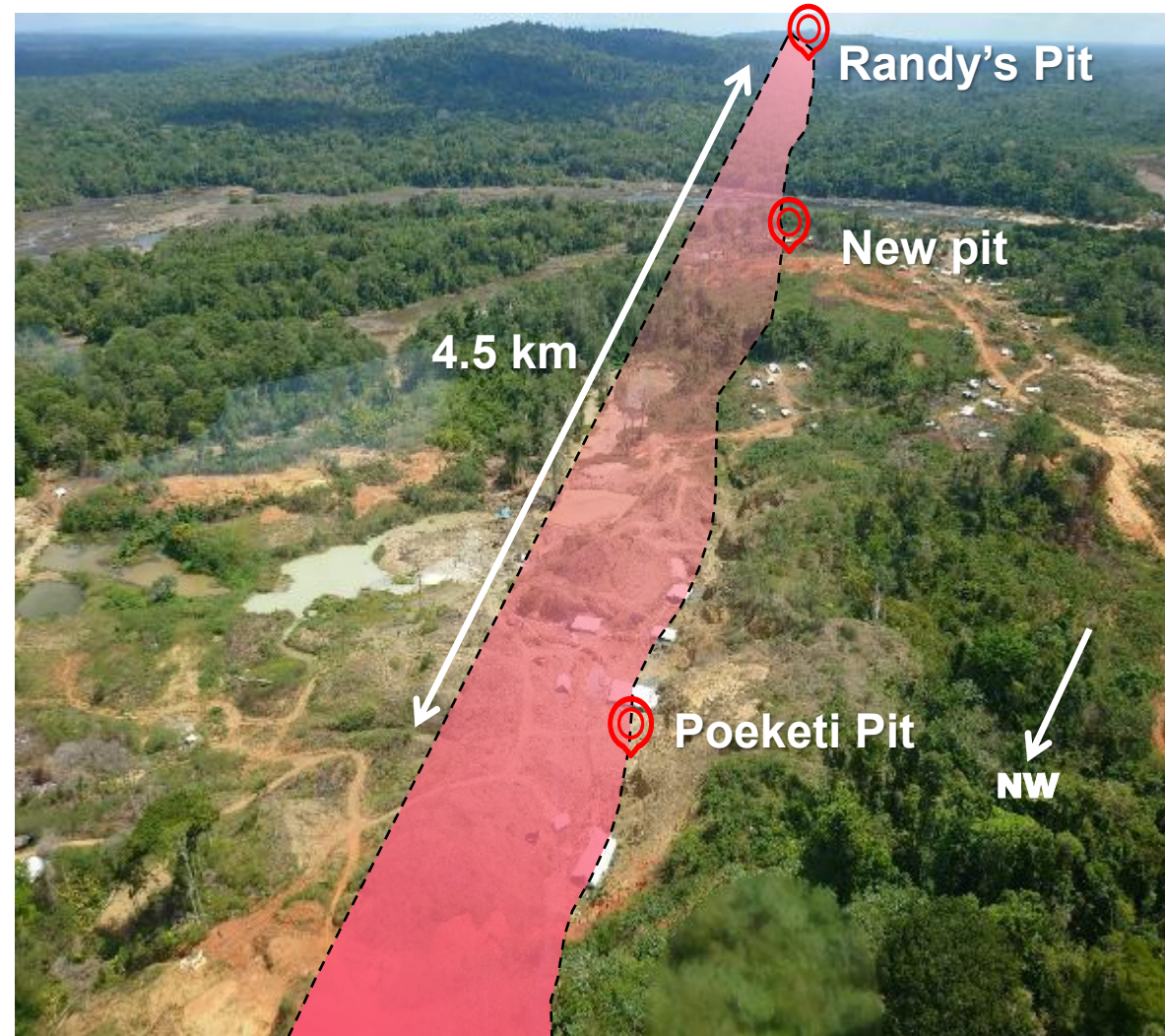
Concession owner starts mining saprolite and commissions 43-101 Technical Report by Dr. Denis LaPoint

2024- present

Sranan Gold
2024 - enters into agreement with concession owner
2025 - commences exploration incl. diamond drilling
2026 - exploration and drilling to continue

Poeketi Shear Zone (Poeketi and Randy's Pit Targets)

- Gold-bearing shear zone extending over 4.5 km and open along strike.
- Extensive active pits and shafts from small-scale miners along surface of the shear zone
- Mining high-grade gold mineralization hosted in quartz carbonate veins
- Sranan's 2025 exploration and drilling focused on the Randy's Pit target
- Small-scale mining activities in the Poeketi Pit area and to the NW represent extensions of the Poeketi Shear Zone

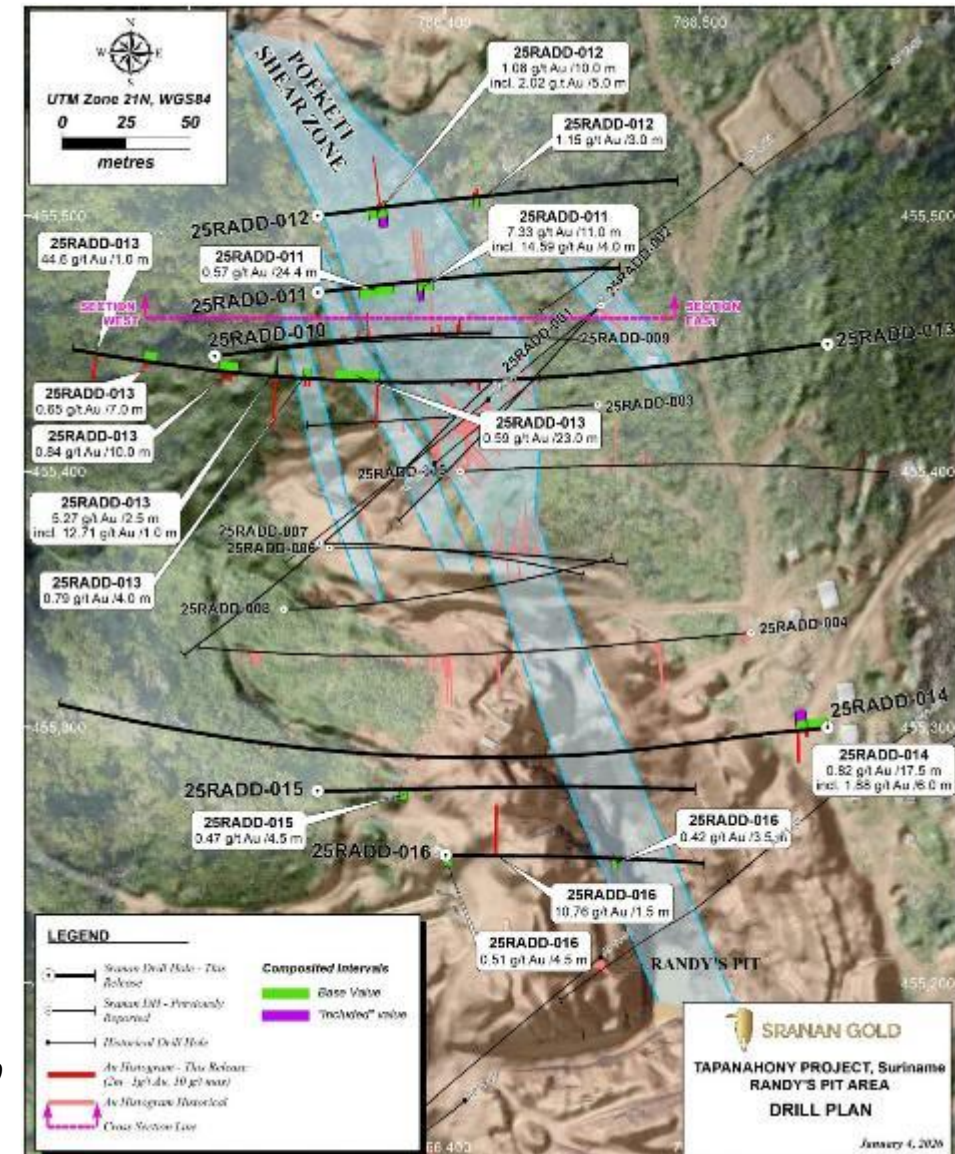


Tapanahony – 2025 Drill Assay Highlights, Randy's Pit



Hole ID	From (m)	To (m)	Interval (m)	Au (g/t)
25RADD-001	23.0	34.5	11.5	3.60
	39.1	30.5	1.4	21.10
25RADD-002	117.5	131.0	13.5	1.80
25RADD-003	72.0	77.0	5.0	5.60
25RADD-004	85.0	95.5	10.5	2.70
	51.0	54.6	3.6	7.90
including	161.0	225.0	64.0	3.00
	164.0	181.0	17.0	10.5
25RADD-005	73.5	85.5	12.0	1.31
25RADD-006	91.6	114.0	22.4	2.44
25RADD-007	144.0	150.0	6.0	3.82
25RADD-008	138.0	146.5	8.5	1.77
25RADD-009	114.0	133.0	19.0	1.68
25RADD-010	194.0	197.0	3.0	1.74
25RADD-011	28.6	53.0	24.4	0.57
	69.0	80.0	11.0	7.33
25RADD-012	29.0	39.0	10.0	1.08
25RADD-013	247.0	270.0	23.0	0.59
	389.5	390.5	1.0	44.6
25RADD-014	0.0	17.5	17.5	0.82
	29.5	31.0	1.5	10.76

Note: weighted average Au grades are based on a 0.3 g/t Au cut-off grade with reported Intervals incorporating no greater than 10 m internal dilution below cut-off grade. Reported Intervals are downhole lengths and do not represent true widths or thickness. True widths are likely to range from about 50% to >85% depending up the interpretation of the mineralized zones.

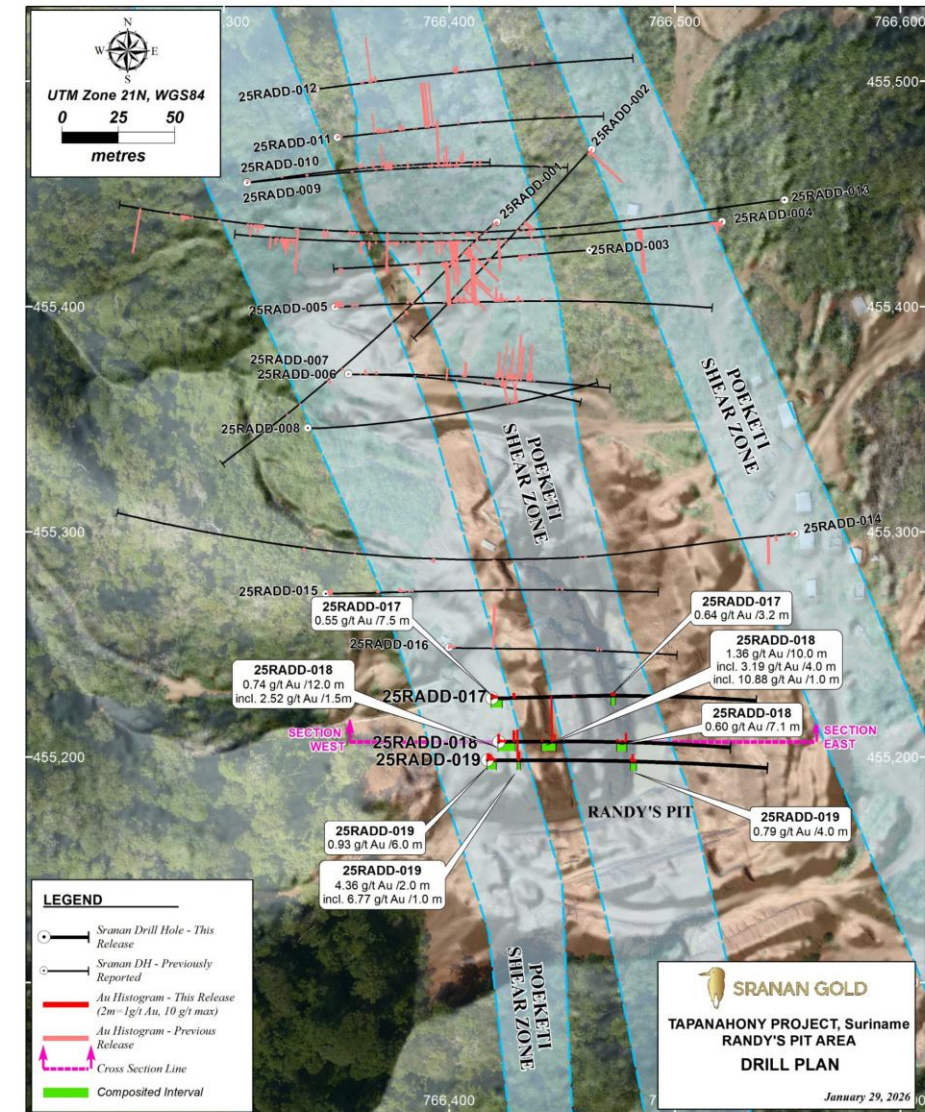


Tapanahony – 2026 Drill Assay Highlights, Randy's Pit

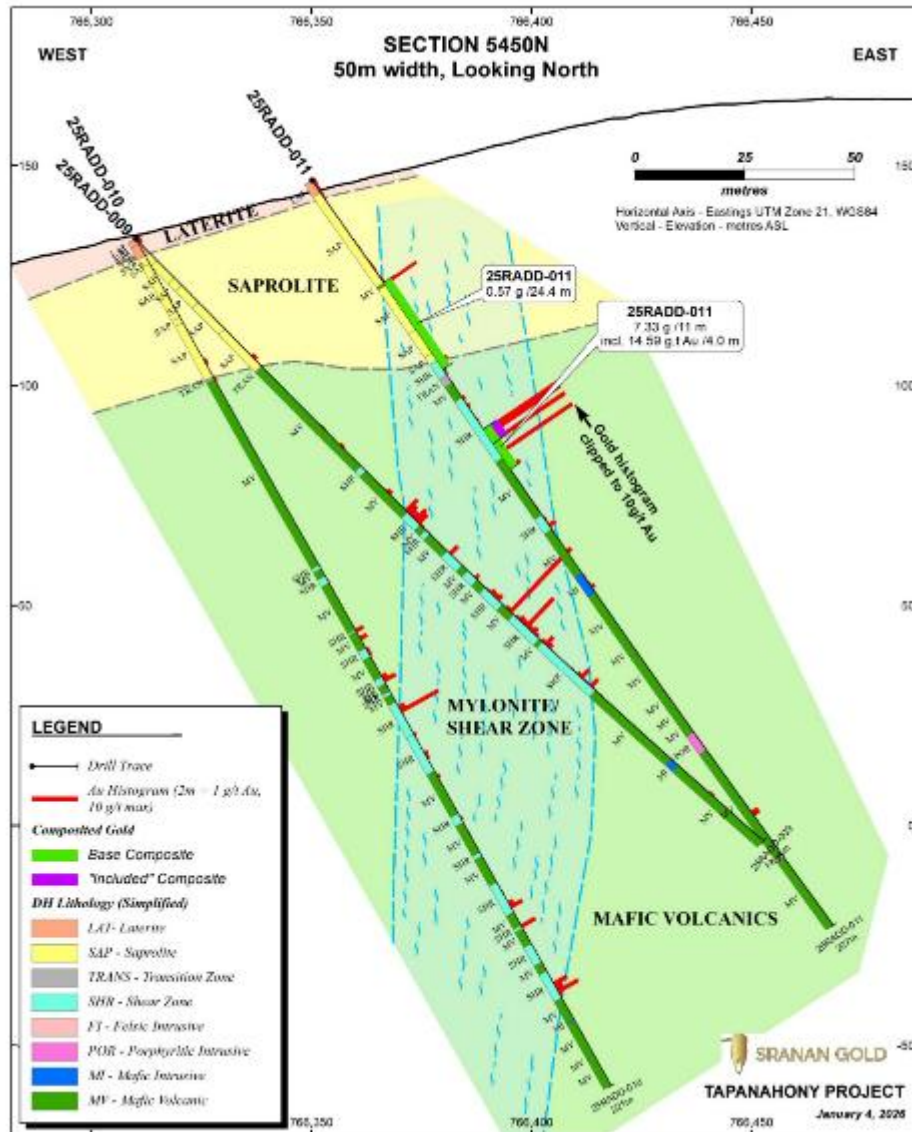


Hole ID	From (m)	To (m)	Interval (m)	Au (g/t)
25RADD-015	46.0	50.5	4.5	0.47
25RADD-016	29.5	31.0	1.5	10.76
25RADD-017	0.0	7.5	7.5	0.55
	82.8	86.0	3.2	0.64
25RADD-018	10.5	12.0	1.5	2.52
	37.0	38.0	1.0	10.88
25RADD-019	19.0	21.0	2.0	4.36
Including	19.0	20.0	1.0	6.77
25RADD-020	51.0	61.5	10.5	0.41
	72.0	74.7	2.7	0.96
25RADD-021	115.0	119.0	4.0	6.58
Including	115.0	116.0	1.0	21.80
Including	118.0	119.0	1.0	3.97
25RADD-022	6.5	16.6	10.1	0.96
	114.0	119.0	5.0	2.24
Including	114.0	117.0	3.0	3.42
25RADD-023	99.0	107.0	8.0	1.73
Including	106.0	107.0	1.0	12.53
	125.0	155.0	30.0	0.67
Including	150.0	153.0	3.0	3.78

Note: weighted average Au grades are based on a 0.3 g/t Au cut-off grade with reported Intervals incorporating no greater than 10 m internal dilution below cut-off grade. Reported Intervals are downhole lengths and do not represent true widths or thickness. True widths are likely to range from about 50% to >85% depending up the interpretation of the mineralized zones.



Cross Section 5450N – Randy’s Pit



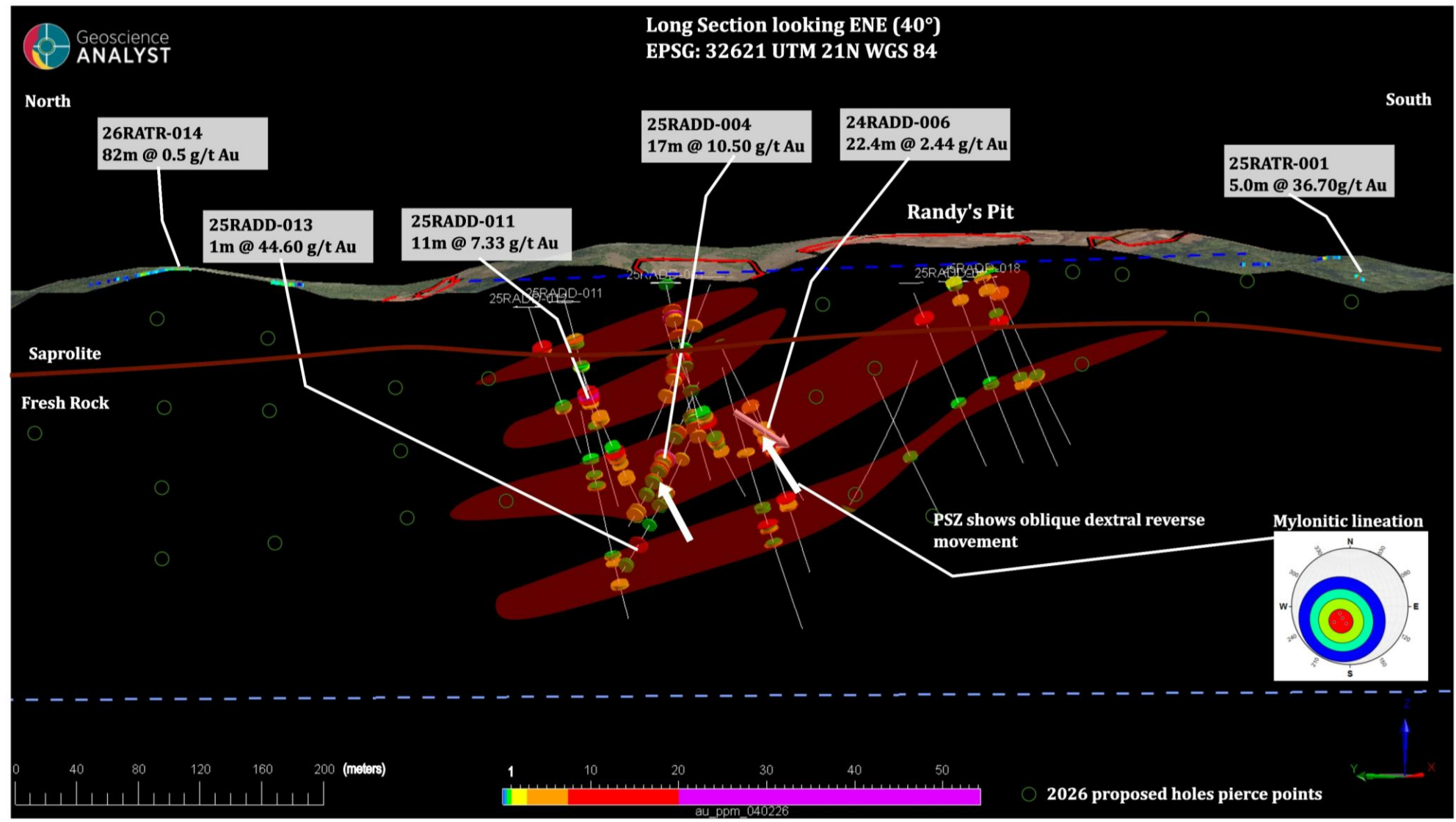
- Gold mineralization traced down 200 m below surface
- Hosted in silicified sheared/mylonitic basalts with visible gold
- 50 m thick saprolite is the focus of artisanal U/G mining
- Section 5450N highlights:

Hole ID	From (m)	To (m)	Interval (m)	Au (g/t)
25RADD-009	114.0	133.0	19.0	1.68
25RADD-010	194.0	197.0	3.0	1.74
25RADD-011	28.6	53.0	24.4	0.57
	69.0	80.0	11.0	7.33

- Poeketi Shear Zone extends from the Randy’s Pit 4.5 km to the northwest and the Poeketi gold zone
- Mineralization remains open in both directions

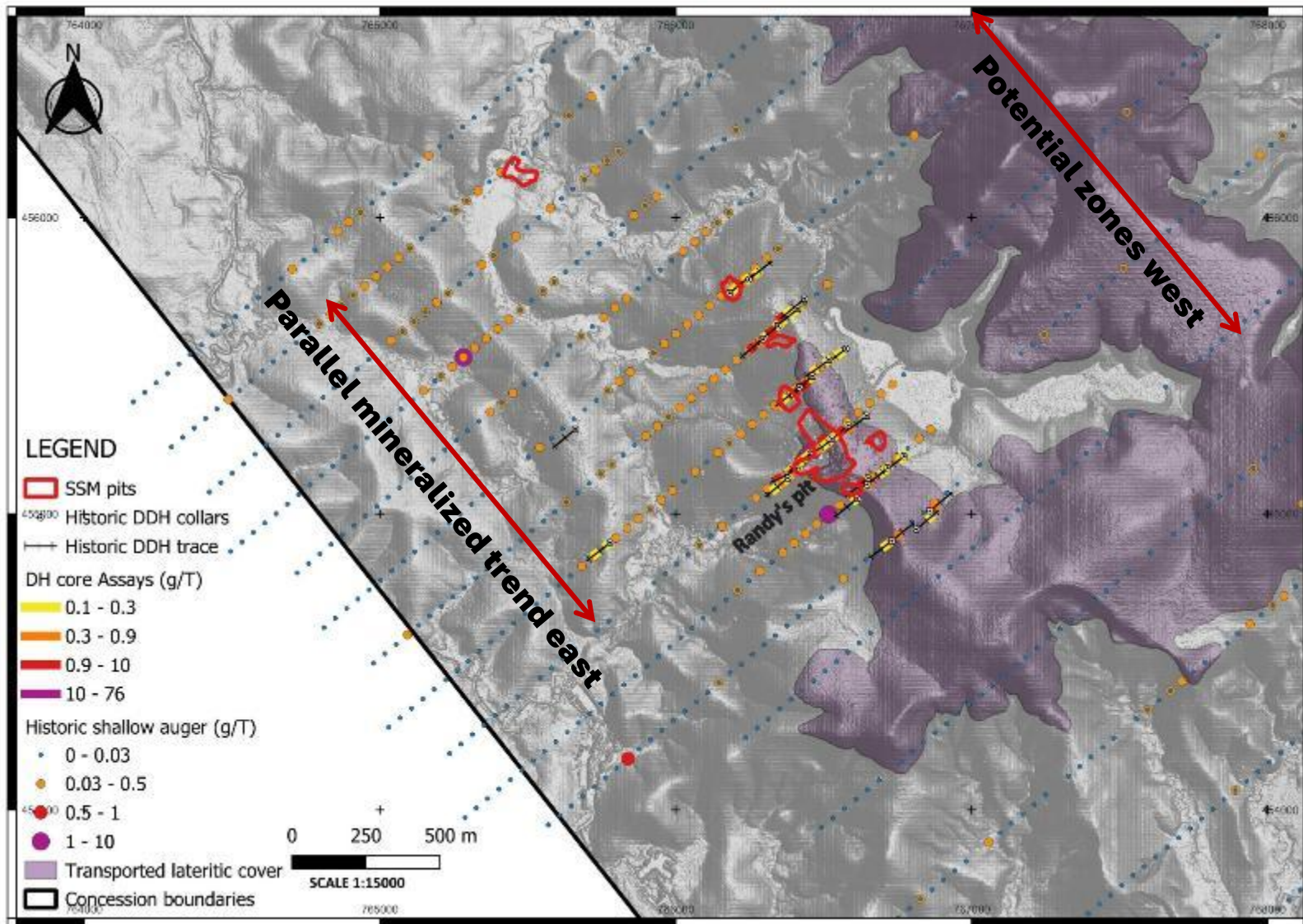
Note: weighted average Au grades are based on a 0.3 g/t Au cut-off grade with reported Intervals incorporating no greater than 10 m internal dilution below cut-off grade. Reported Intervals are downhole lengths and do not represent true widths or thickness. True widths are likely to range from about 50% to >85% depending up the interpretation of the mineralized zones.

Poeketi Shear Zone drilling and structural update 2026



- Poeketi Shear Zone (PSZ) is mylonite within folded and strained basalt
- PSZ is an oblique dextral reverse shear zone
- Main high grade lenses are dipping NW along shear fabric
- PSZ shows progressive strain with pre and post shear extensional vein sets
- Visible gold is often seen on shear planes

Potential for a New Zone Parallel to Randy's Pit Trend

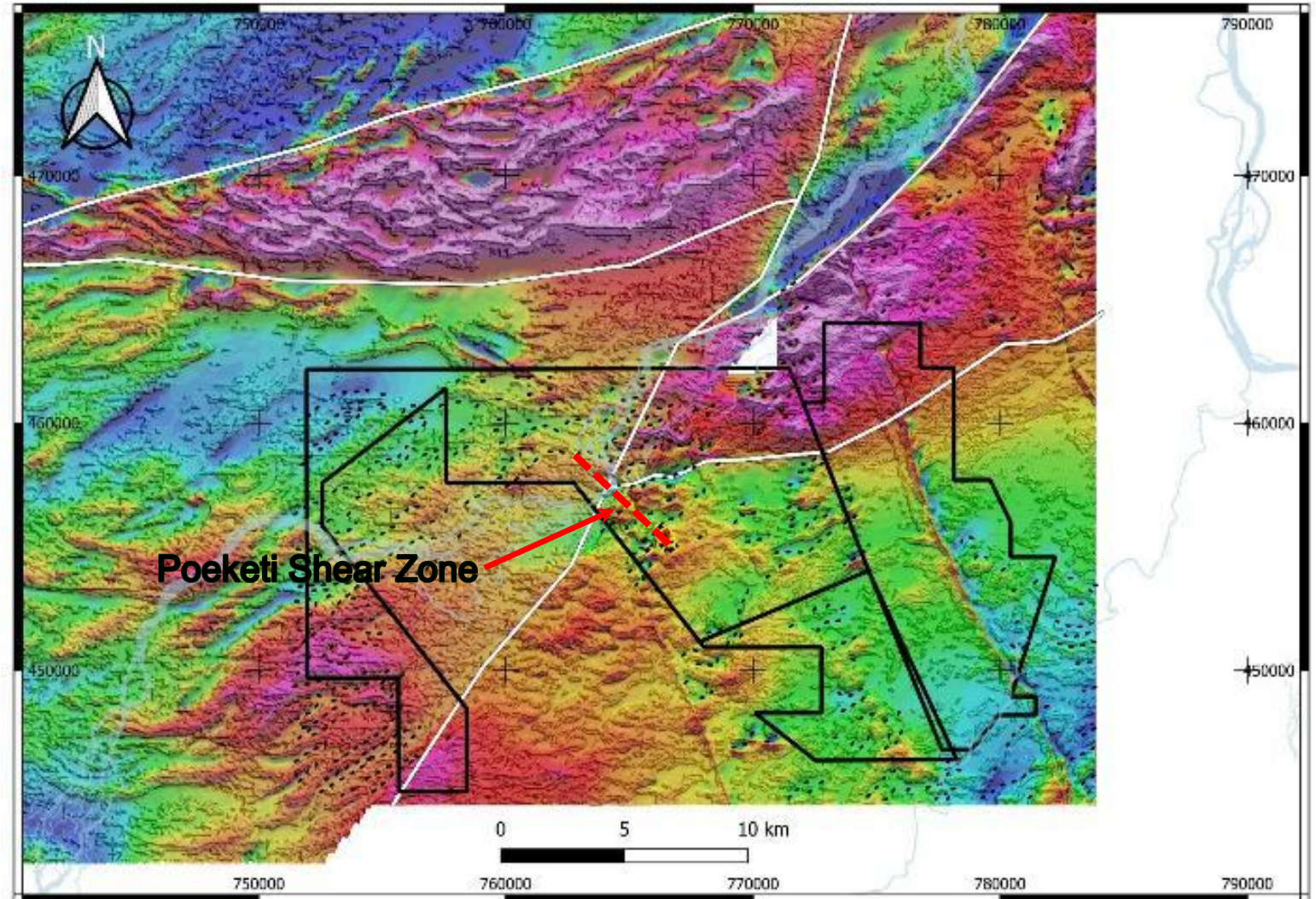


- New trend outlined from historic auger results and supported by LiDAR survey
- LiDAR allows for high resolution visualization of structure and lateritic surfaces
- Lateritic surfaces may cover mineralization at Poeketi Shear Zone
- High elevation lateritic terrace may cover the next Poeketi Shear Zone

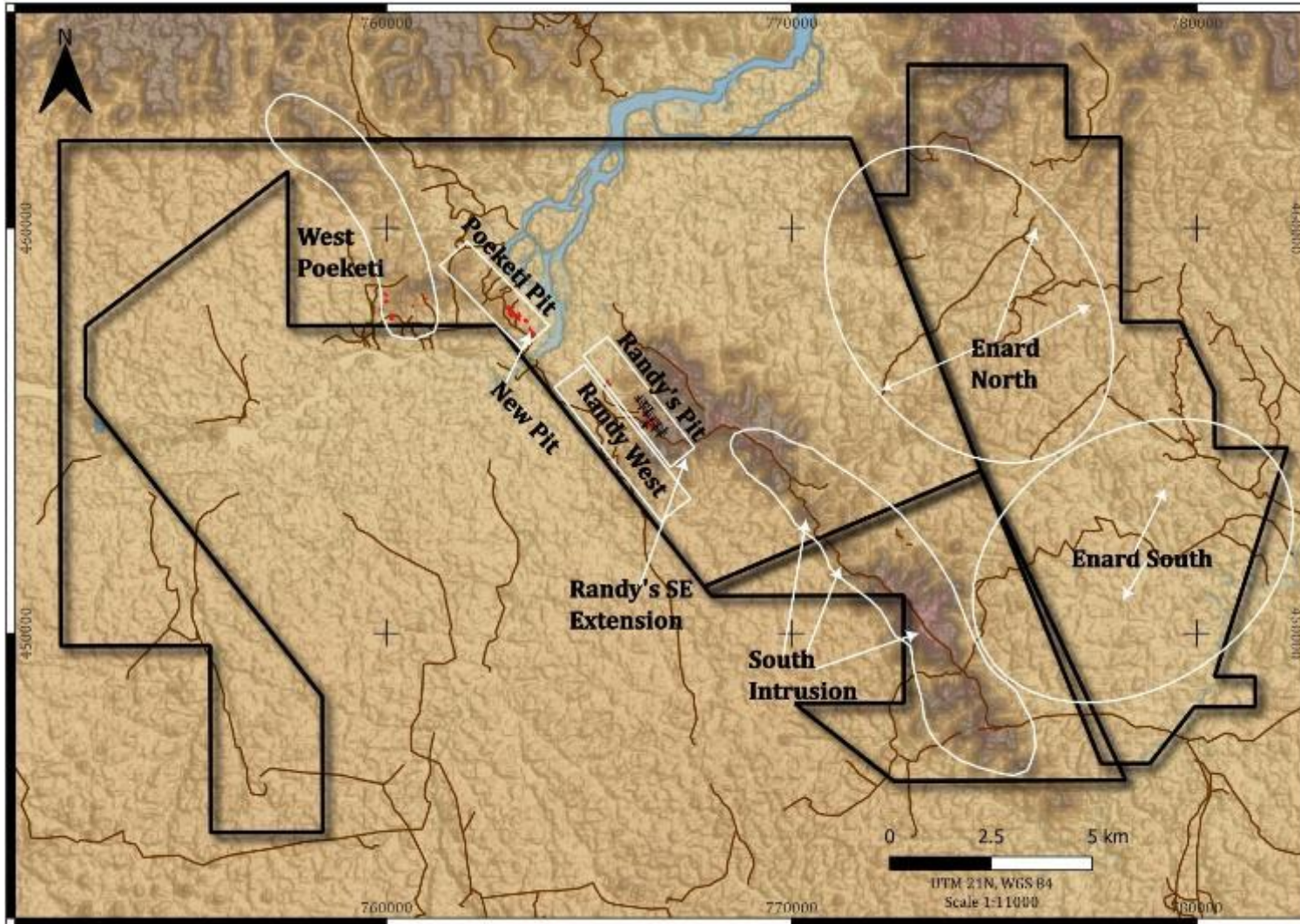
Regional Setting from Aeromagnetic Surveys



- Large-scale litho-structural contacts are displaced by dextral NE-SW fault along the Tapanahony river
- NE striking property-scale trend is cross-cut by penetrative NW-SE striking fabrics that crenulated the first deformation event, which creates a favourable environment for deposition of gold mineralization.

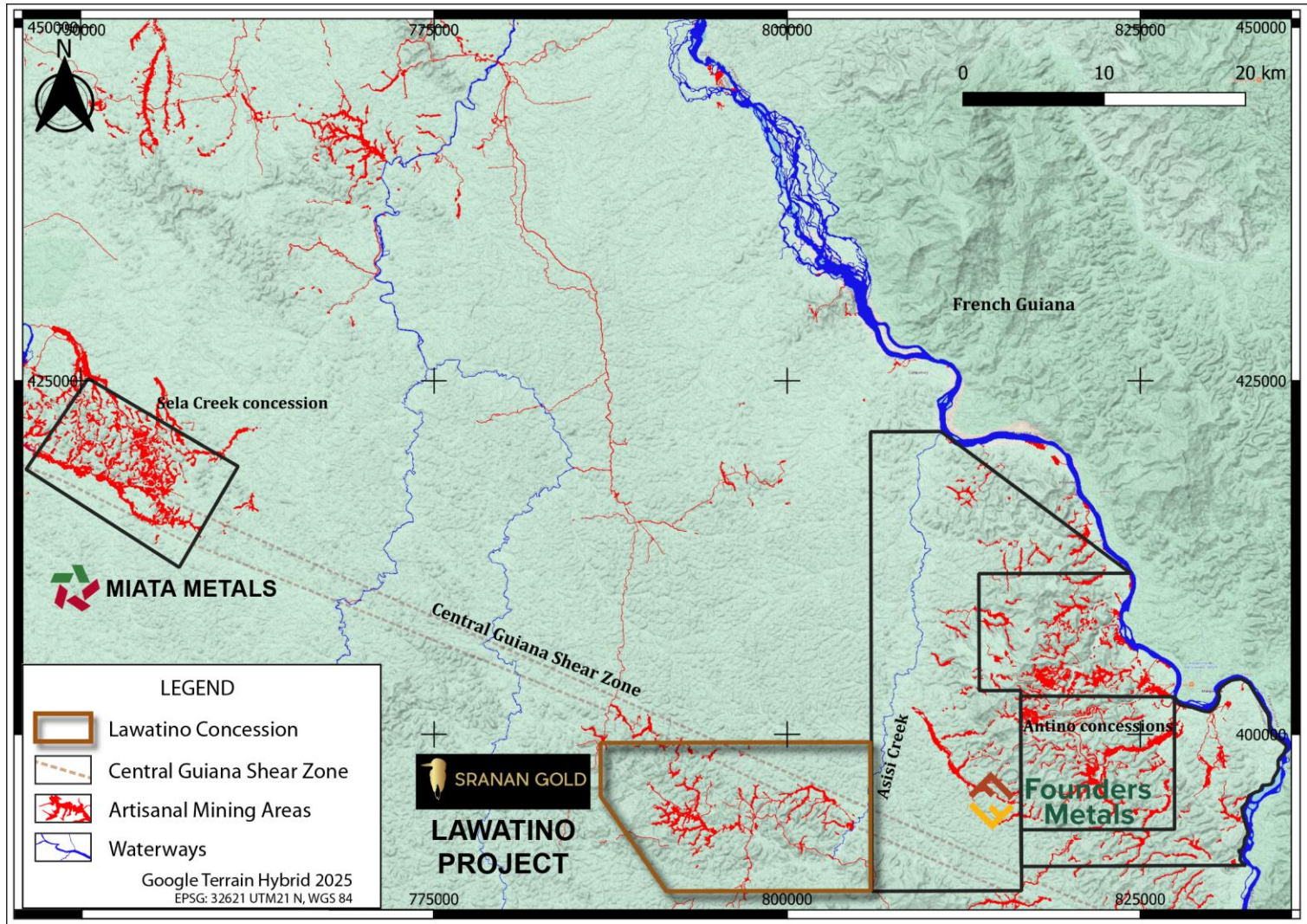


Priority Exploration Targets Program



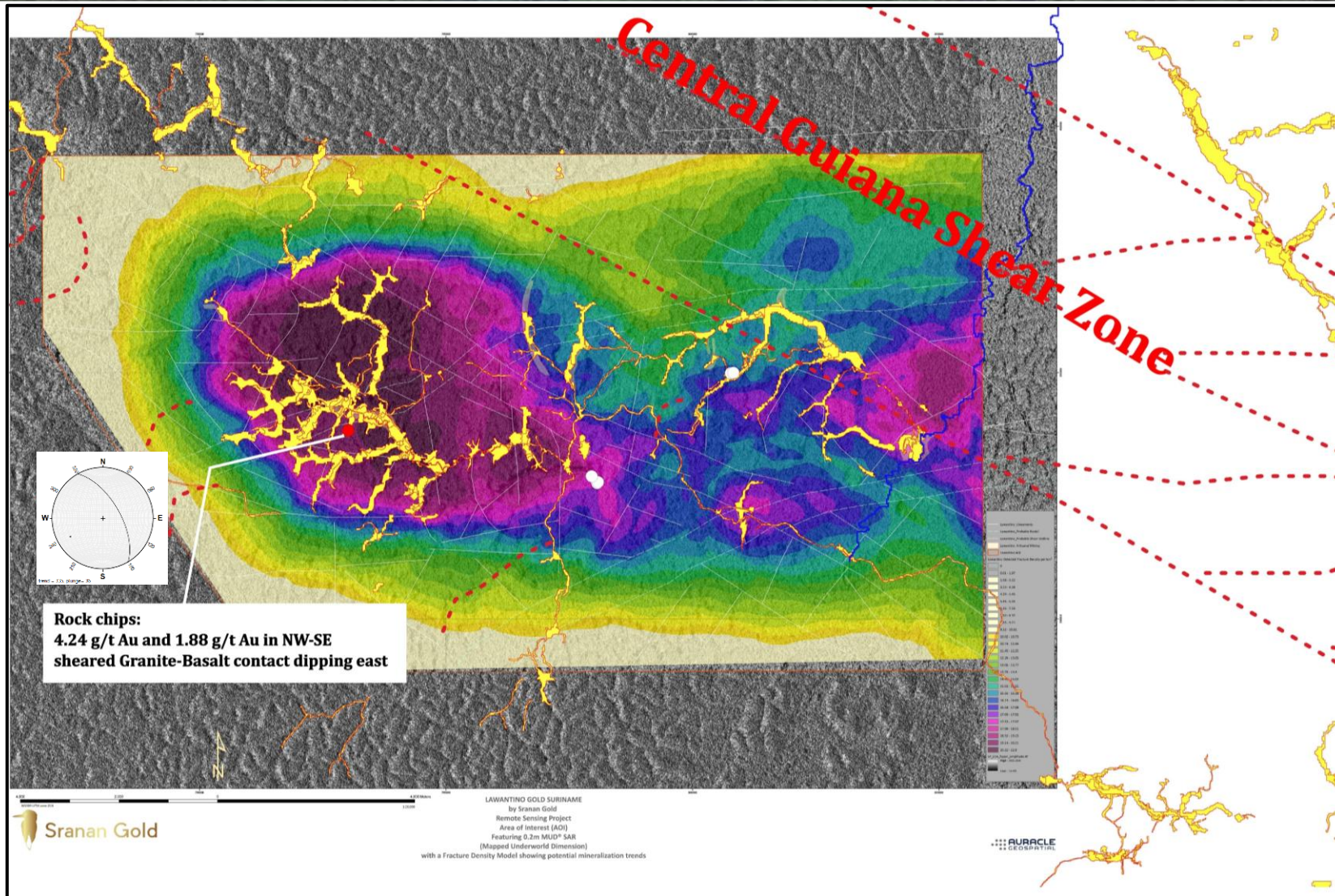
- Randy's Pit is the initial priority for drilling, which is based on historical drilling by lamgold and later mining by local miners.
- Drilling is focused on the Randy's Pit and extensions, along strike and at depth
- Each of the target areas has been identified by a combination Lidar survey, geophysics, geological interpretation, exploration data from previous operators, fieldwork, and most importantly structural understanding of shear related gold systems

New acquisition – Lawatino Concession



- 18000 Ha of highly prospective land located SW of the Central Guiana Shear Zone (CGSZ)
- District scale shear zone associated with late movements that influenced mineralization at Antino as well as the Sela Creek properties
- Sranan Gold reconnaissance work shows extensive artisanal mining within the drainages
- Two samples collected by Sranan returned values of 4.24 and 1.88 g/t Au.
- The two samples were collected from a shear-hosted quartz vein

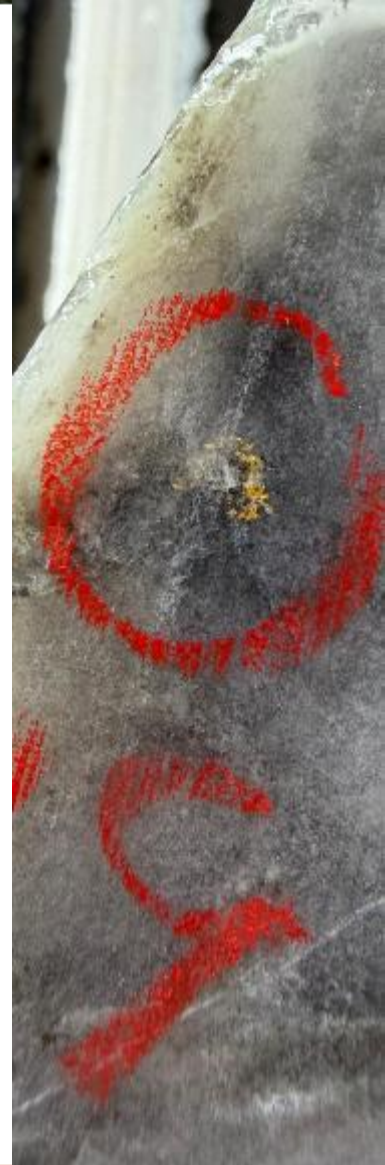
Lawatino concession-MUD® SAR Technology



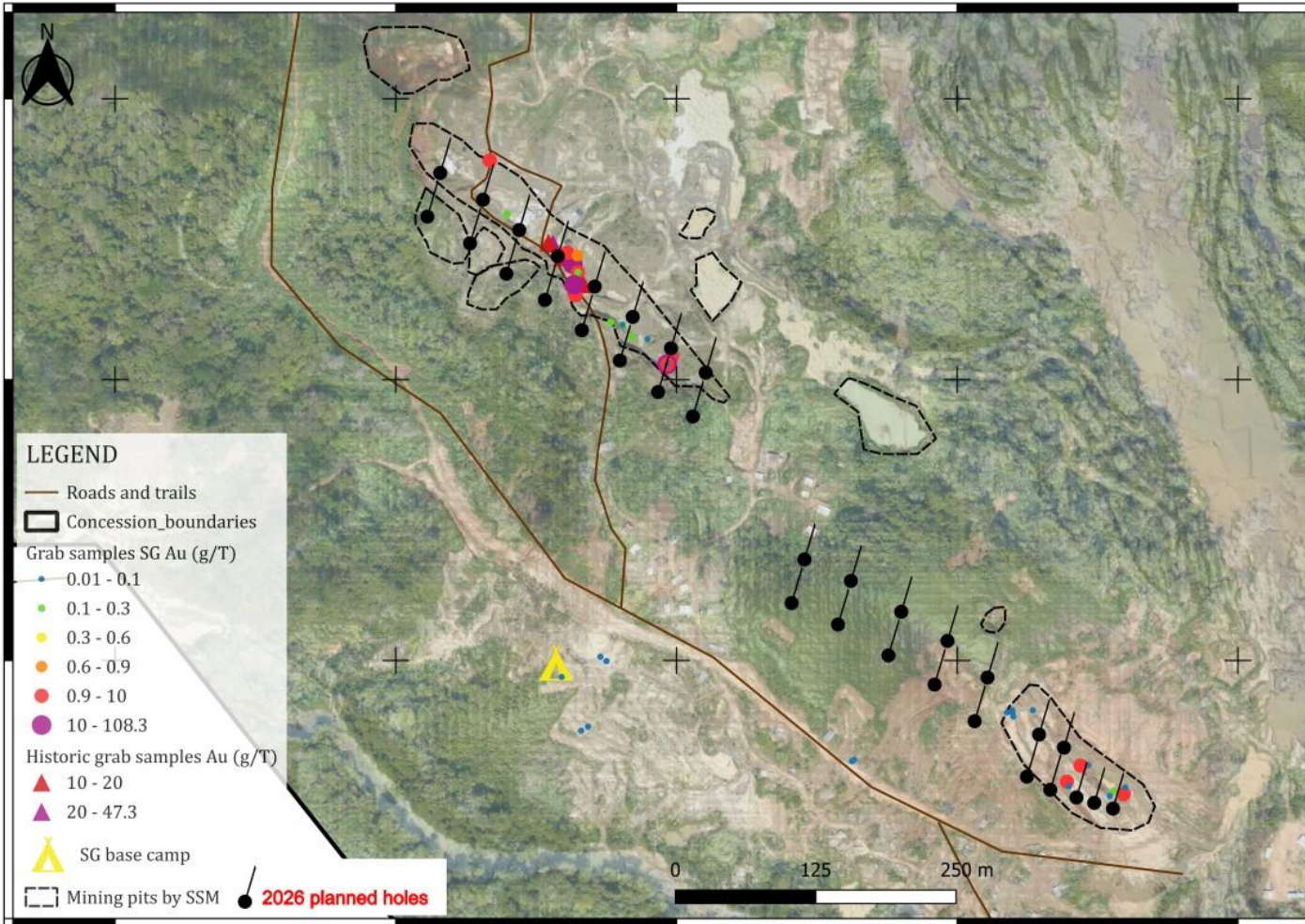
- Fracture density map showing structural preparation for gold
- Yellow areas active small-scale mining that correlate with high fracture density
- Central Guiana Shield Shear Zone cuts concession
- CGSZ is a first order structure controlling gold at Sela Creek (Miata) and Antino (Founders)
- Assay results are positive for exploration for a major gold system

2026 Exploration approach

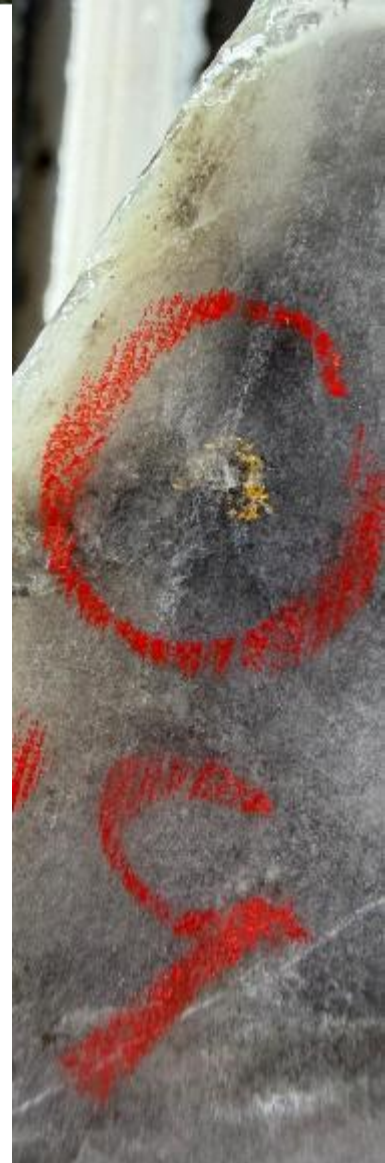
- Actively exploring the prospective Tapanahony Gold Project in the Guiana Shield
- Extensive artisanal mining along the 4.5 km trend along the Poeketi Shear Zone
- Sranan Gold commenced exploration in 2025
- 4,189 m of diamond drilling completed in 2025. started in 3rd quarter of 2025
- Significant drill results from Randy's Pit target include:
 - 3.00 g/t Au over 64.0 m including 10.5 m @ 17.00 g/t Au (25RADD-04)
 - 2.44 g/t Au over 22.4 m (25RADD-006)
 - 7.33 g/t Au over 11.0 m (25RADD-011)
 - 44.60 g/t Au over 1.0 m (25RADD-013)
- 2026 drilling has begun with plans for a second drill rig at the Poeketi target during Q2
- Management has a long history of in-country exploration success



2026 Exploration approach



- **Randy's Pit** - Continue expansion of discovery by drilling and trenching; Additional 2500 m planned
- **Poeketi Target** - Start drilling in second quarter. 5,000 meters planned
- **Randy's Pit and Poeketi Targets extensions** - Mapping, sampling, trenching to define drill targets
- **Lawatino** - Remote sensing, logistics, mapping and sampling exposures and pits



Sranan Gold Investment Highlights



100% ownership of the 29,000 ha Tapanahony Project, which is the focus of extensive artisanal gold mining



2025 Phase I diamond drilling returning broad zones of gold mineralization at Randy's Pit Target:

- 64.0 m grading 3.00 g/t Au
- 22.4 m grading 2.44 g/t Au
- 19.0 m grading 1.68 g/t Au
- 11.0 m grading 7.33 g/t Au



Randy's Pit Target hosted within the largely untested 4.5 km Poeketi Shear Zone



2026 diamond drilling program has commenced

Steady flow of exploration results expected



Management has extensive experience in Surinamese exploration

Sranan - Capital Structure	Shares (millions)
Shares Outstanding	67.692
Options	9.398
Warrants	1.030
Shares Fully Diluted	78.120

Major Shareholders	%
Metals Group, Management & Insiders	21.5
Mackenzie Investments	7.5
1832 Asset Management (Scotia)	7.0
Retail Shareholders	64.0



Sranan Gold

Contact Us

For any questions or clarifications on our presentation.

Oscar Louzada, CEO
oscar@sranangold.com
+44 782313842
+31 6 25438975

www.sranangold.com